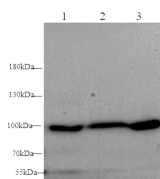


ST14 Polyclonal Antibody

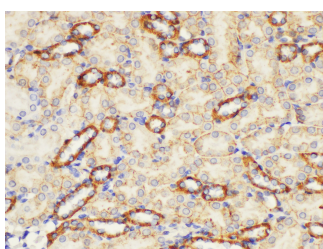
Catalog No.	E-AB-40379	Reactivity	M,R
Storage	Store at -20°C. Avoid freeze / thaw cycles.	Host	Rabbit
Applications	WB,IHC	Isotype	IgG

Note: Centrifuge before opening to ensure complete recovery of vial contents.

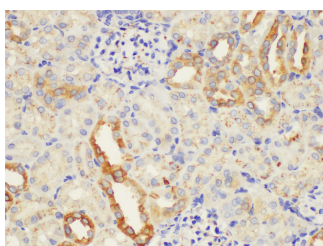
Images



Western blot with ST14 Polyclonal antibody at dilution of 1:1000.lane 1:Mouse Kidney, lane 2:Mouse breast, lane 3: Rat Kidney



Immunohistochemistry of paraffin-embedded Mouse kidney using ST14 Polyclonal Antibody at dilution of 1:200.



Immunohistochemistry of paraffin-embedded Rat kidney using ST14 Polyclonal Antibody at dilution of 1:200.

Immunogen Information

Immunogen	Recombinant Mouse Suppressor of tumorigenicity 14 protein homolog protein
GeneID	19143
Swissprot	P56677
Synonyms	SNC 19,SNC19,ST 14,ST14,ST14,TADG 15,TADG15,TMPRSS14

Product Information

Calculated MW	95kDa
Observed MW	80-95 kDa
Buffer	PBS with 0.05% Proclin300, 50% glycerol, pH7.3.
Purify	Antigen Affinity Purification
Dilution	WB:1:500-1000 IHC 1:100-1:300

Background

The protein encoded by this gene is an epithelial-derived, integral membrane serine protease. This protease forms a complex with the Kunitz-type serine protease inhibitor, HAI-1, and is found to be activated by sphingosine 1-phosphate. This protease has been shown to cleave and activate hepatocyte growth factor/scattering factor, and urokinase plasminogen activator, which suggest the function of this protease as an epithelial membrane activator for other proteases and latent growth factors.

For Research Use Only

Thank you for your recent purchase.
 If you would like to learn more about antibodies, please visit www.elabscience.com.

**Focus on your research
 Service for life science**

Applications:WB-Western Blot IHC-Immunohistochemistry IF-Immunofluorescence IP-Immunoprecipitation FC-Flow cytometry ChIP-Chromatin Immunoprecipitation Reactivity: H-Human R-Rat M-Mouse Mk-Monkey Dg-Dog Ch-Chicken Hm-Hamster Rb-Rabbit Sh-Sheep Pg-Pig Z-Zebrafish X-Xenopus C-Cow.