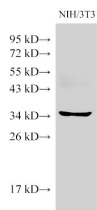


BMI1 Polyclonal Antibody

Catalog No.	E-AB-40381	Reactivity	M
Storage	Store at -20°C. Avoid freeze / thaw cycles.	Host	Rabbit
Applications	WB	Isotype	IgG

Note: Centrifuge before opening to ensure complete recovery of vial contents.

Images



Western Blot analysis of NIH/3T3 cells using BMI1 Polyclonal Antibody at dilution of 1:500.

Immunogen Information

Immunogen	Recombinant Mouse Polycomb complex protein BMI-1 protein
Swissprot	P25916
Synonyms	Bmi 1,BMI1,PCGF 4,PCGF4,RNF 51,RNF51

Product Information

Calculated MW	36 kDa
Observed MW	36 kDa
Buffer	PBS with 0.05% Proclin300, 50% glycerol, pH7.3.
Purify	Antigen Affinity Purification
Dilution	WB 1:500-1:1000

Background

BMI- 1 is one of polycomb group genes,which together with Ring1 strongly enhances the E3 ubiquitin ligase activity of the Ring2 catalytic subunit. Bmi1 plays an important role in the regulation of cell proliferation and senescence through repression of the p16Ink4a and p19Arf genes and is required for maintenance of adult hematopoietic and neural stem cells. The antibody reacts with the 37kd BMI1 protein.

For Research Use Only

Thank you for your recent purchase.
 If you would like to learn more about antibodies,please visit www.elabscience.com.

**Focus on your research
 Service for life science**

Applications:WB-Western Blot IHC-Immunohistochemistry IF-Immunofluorescence IP-Immunoprecipitation FC-Flow cytometry ChIP-Chromatin Immunoprecipitation Reactivity: H-Human R-Rat M-Mouse Mk-Monkey Dg-Dog Ch-Chicken Hm-Hamster Rb-Rabbit Sh-Sheep Pg-Pig Z-Zebrafish X-Xenopus C-Cow.