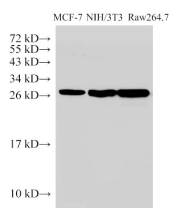


Galectin 3 Polyclonal Antibody

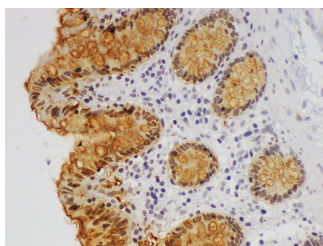
Catalog No.	E-AB-40382	Reactivity	H,M
Storage	Store at -20°C. Avoid freeze / thaw cycles.	Host	Rabbit
Applications	WB,IHC	Isotype	IgG

Note: Centrifuge before opening to ensure complete recovery of vial contents.

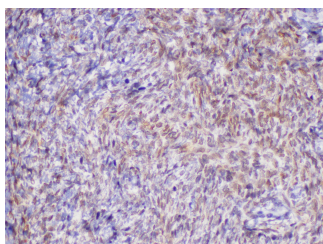
Images



Western Blot analysis of 1)MCF-7, 2)NIH/3T3, 3)Raw264.7 using Galectin 3 Polyclonal Antibody at dilution of 1:1000.



Immunohistochemistry of paraffin-embedded Human colon using Galectin 3 Polyclonal Antibody at dilution of 1:50.



Immunohistochemistry of paraffin-embedded Human ovary using Galectin 3 Polyclonal Antibody at dilution of 1:50.

Immunogen Information

Immunogen	Recombinant Human Galectin-3 protein
GeneID	3958
Swissprot	P17931
Synonyms	LGALS3,MAC2,Galectin-3,Gal-3,35 kDa lectin,Carbohydrate-binding protein 35,CBP 35,Galactose-specific lectin 3,Galactoside-binding protein,GALBP,IgE-binding protein,L-31,Laminin-binding protein,Lectin L-29,Mac-2 antigen

Product Information

Calculated MW	26 kDa
Observed MW	26 kDa
Buffer	PBS with 0.05% Proclin300, 50% glycerol, pH7.3.
Purify	Antigen Affinity Purification
Dilution	WB 1:500-1:2000 IHC 1:50-1:100

Background

Galectins are a family of animal lectins defined by shared characteristic amino-acid sequences and affinity for β -galactose-containing oligosaccharides. Galectin-3 contains one carbohydrate recognition domain (CRD) and a proline- and glycine-rich N-terminal domain through which is able to form oligomers. Galectin-3 is widely expressed in many normal tissues and a variety of tumors. It is found intracellularly in nucleus and cytoplasm or secreted outside of cell, being present on the cell surface or in the extracellular space. Galectin-3 is involved in various biological processes including cell growth, adhesion, differentiation, apoptosis, angiogenesis, immune response, neoplastic transformation and metastasis.

For Research Use Only

Thank you for your recent purchase.
If you would like to learn more about antibodies, please visit www.elabscience.com.

Focus on your research Service for life science

Applications: WB-Western Blot IHC-Immunohistochemistry IF-Immunofluorescence IP-Immunoprecipitation FC-Flow cytometry ChIP-Chromatin Immunoprecipitation Reactivity: H-Human R-Rat M-Mouse Mk-Monkey Dg-Dog Ch-Chicken Hm-Hamster Rb-Rabbit Sh-Sheep Pg-Pig Z-Zebrafish X-Xenopus C-Cow.