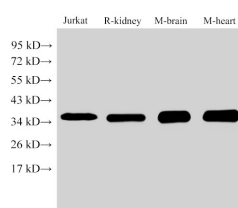


LDHB Polyclonal Antibody

Catalog No.	E-AB-40383	Reactivity	H,M,R
Storage	Store at -20°C. Avoid freeze / thaw cycles.	Host	Rabbit
Applications	WB	Isotype	IgG

Note: Centrifuge before opening to ensure complete recovery of vial contents.

Images



Western Blot analysis of 1)Jurkat, 2)Rat kidney, 3)Mouse brain, 4)Mouse heart using LDHB Polyclonal Antibody at dilution of 1:1000.

Immunogen Information

Immunogen	Recombinant Human L-lactate dehydrogenase B chain protein
Swissprot	P07195
Synonyms	HEL-S-281;LDH-B;LDH-H;LDHBD;TRG-5

Product Information

Calculated MW	36 kDa
Observed MW	36 kDa
Buffer	PBS with 0.05% Proclin300, 50% glycerol, pH7.3.
Purify	Antigen Affinity Purification
Dilution	WB 1:500-1:2000

Background

LDHB,also named as LDH-H and NY-REN-46,belongs to the LDH/MDH superfamily. And LDH family. It is an enzyme which catalyzes the reversible conversion of lactate and pyruvate,and NAD and NADH,in the glycolytic pathway.It is glycolytic enzymes and it is positively regulated by mTOR.

For Research Use Only

Thank you for your recent purchase.

If you would like to learn more about antibodies,please visit www.elabscience.com.

**Focus on your research
 Service for life science**

Applications:WB-Western Blot IHC-Immunohistochemistry IF-Immunofluorescence IP-Immunoprecipitation FC-Flow cytometry ChIP-Chromatin Immunoprecipitation Reactivity: H-Human R-Rat M-Mouse Mk-Monkey Dg-Dog Ch-Chicken Hm-Hamster Rb-Rabbit Sh-Sheep Pg-Pig Z-Zebrafish X-Xenopus C-Cow.