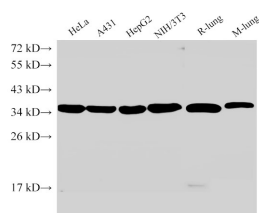


ANXA5 Polyclonal Antibody

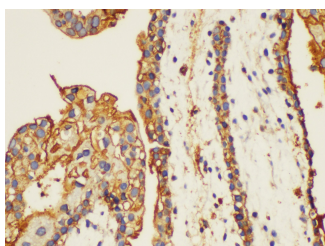
| | | | |
|---------------------|---|-------------------|--------|
| Catalog No. | E-AB-40386 | Reactivity | H,M,R |
| Storage | Store at -20°C. Avoid freeze / thaw cycles. | Host | Rabbit |
| Applications | WB,IHC | Isotype | IgG |

Note: Centrifuge before opening to ensure complete recovery of vial contents.

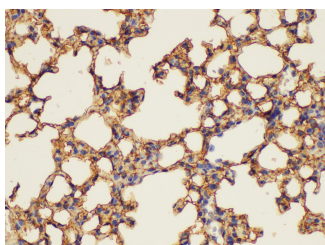
Images



Western Blot analysis of 1)Hela, 2)A431, 3)HepG2, 4)NIH/3T3, 5)Rat lung, 6)Mouse lung using ANXA5 Polyclonal Antibody at dilution of 1:2000.



Immunohistochemistry of paraffin-embedded Human placenta using ANXA5 Polyclonal Antibody at dilution of 1:100.



Immunohistochemistry of paraffin-embedded Mouse lung using ANXA5 Polyclonal Antibody at dilution of 1:100.

Immunogen Information

| | |
|------------------|--|
| Immunogen | Recombinant Human Annexin A5 protein |
| GeneID | 308 |
| Swissprot | P08758 |
| Synonyms | Anchorin CII,Annexin A5,Annexin V,Annexin-5,ANX5,ANXA5,Calphobindin I,Endonexin II,ENX2,Lipocortin V,PAP I,Pp4,VAC-alpha |

Product Information

| | |
|----------------------|---|
| Calculated MW | 35 kDa |
| Observed MW | 35 kDa |
| Buffer | PBS with 0.05% Proclin300, 50% glycerol, pH7.3. |
| Purify | Antigen Affinity Purification |
| Dilution | WB 1:1000-1:3000 IHC 1:100-1:200 |

Background

Annexin A5 (ANXA5), is a member of the structurally related family of annexin proteins some of which have been implicated in membrane-related events along exocytotic and endocytotic pathways. Annexin 5 is a phospholipase A2 and protein kinase C inhibitory protein with calcium channel activity and a potential role in cellular signal transduction, inflammation, growth and differentiation. Annexin 5 has also been described as placental anticoagulant protein I, vascular anticoagulant-alpha, endonexin II, lipocortin V, placental protein 4 and anchorin CII.

For Research Use Only

Thank you for your recent purchase.
 If you would like to learn more about antibodies, please visit www.elabscience.com.

**Focus on your research
 Service for life science**

Applications: WB-Western Blot IHC-Immunohistochemistry IF-Immunofluorescence IP-Immunoprecipitation FC-Flow cytometry ChIP-Chromatin Immunoprecipitation Reactivity: H-Human R-Rat M-Mouse Mk-Monkey Dg-Dog Ch-Chicken Hm-Hamster Rb-Rabbit Sh-Sheep Pg-Pig Z-Zebrafish X-Xenopus C-Cow.