

KLK2 Polyclonal Antibody

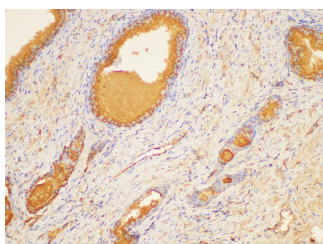
Catalog No.	E-AB-40367	Reactivity	H,M
Storage	Store at -20°C. Avoid freeze / thaw cycles.	Host	Rabbit
Applications	WB,IHC	Isotype	IgG

Note: Centrifuge before opening to ensure complete recovery of vial contents.

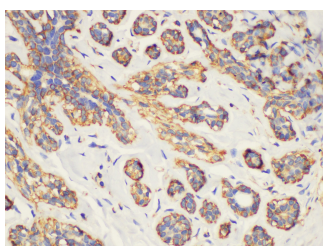
Images



Western Blot analysis of Mouse pancreas using KLK2 Polyclonal Antibody at dilution of 1:2000.



Immunohistochemistry of paraffin-embedded Human prostate using KLK2 Polyclonal Antibody at dilution of 1:200.



Immunohistochemistry of paraffin-embedded Human breast using KLK2 Polyclonal Antibody at dilution of 1:200.

Immunogen Information

Immunogen	Recombinant Human Kallikrein-2 protein
GeneID	3817
Swissprot	P20151
Synonyms	hK2,hGK-1,KLK2A2

Product Information

Calculated MW	17,18,24,28 kDa
Observed MW	28 kDa
Buffer	PBS with 0.05% Proclin300, 50% glycerol, pH7.3.
Purify	Antigen Affinity Purification
Dilution	WB 1:2000-1:3000 IHC 1:100-1:300

Background

This gene encodes a member of the granular kallikrein protein family. Kallikreins are a subgroup of serine proteases that are clustered on chromosome 19. Members of this family are involved in a diverse array of biological functions. The protein encoded by this gene is a highly active trypsin-like serine protease that selectively cleaves at arginine residues. This protein is primarily expressed in prostatic tissue and is responsible for cleaving pro-prostate-specific antigen into its enzymatically active form. This gene is highly expressed in prostate tumor cells and may be a prognostic marker for prostate cancer risk. Alternate splicing results in both coding and non-coding transcript variants.

For Research Use Only

Thank you for your recent purchase.
 If you would like to learn more about antibodies, please visit www.elabscience.com.

**Focus on your research
 Service for life science**

Applications:WB-Western Blot IHC-Immunohistochemistry IF-Immunofluorescence IP-Immunoprecipitation FC-Flow cytometry ChIP-Chromatin Immunoprecipitation Reactivity: H-Human R-Rat M-Mouse Mk-Monkey Dg-Dog Ch-Chicken Hm-Hamster Rb-Rabbit Sh-Sheep Pg-Pig Z-Zebrafish X-Xenopus C-Cow.