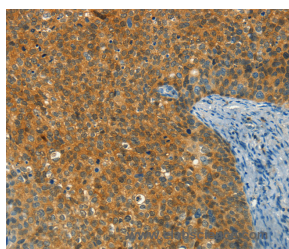


DIRAS1 Polyclonal Antibody

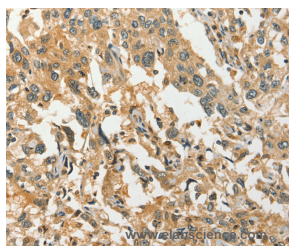
Catalog No.	E-AB-16393	Reactivity	H
Storage	Store at -20°C. Avoid freeze / thaw cycles.	Host	Rabbit
Applications	IHC,ELISA	Isotype	IgG

Note: Centrifuge before opening to ensure complete recovery of vial contents.

Images



Immunohistochemistry of paraffin-embedded Human cervical cancer tissue using DIRAS1 Polyclonal Antibody at dilution 1:30



Immunohistochemistry of paraffin-embedded Human esophagus cancer tissue using DIRAS1 Polyclonal Antibody at dilution 1:30

Immunogen Information

Immunogen	Synthetic peptide of human DIRAS1
Gene Accession	NP_660156
Swissprot	O95057
Synonyms	aminopeptidase Fxna,ERMP1,ERMP1,Felix-ina,FXNA,KIAA1815

Product Information

Buffer	PBS with 0.05% sodium azide and 50% glycerol, PH7.4
Purify	Affinity purification
Dilution	IHC 1:50-1:200

Background

DIRAS1 (DIRAS family, GTP-binding Ras-like 1), also known as distinct subgroup of the Ras family member 1, RIG (Ras-related inhibitor of cell growth), small GTP-binding tumor suppressor 1 or GBTS1, is a 198 amino acid cell membrane protein expressed at high levels in brain and heart. DIRAS1 displays low GTPase activity and is encoded by a gene that maps to human chromosome 19p13.3.

For Research Use Only

Thank you for your recent purchase.
 If you would like to learn more about antibodies, please visit www.elabscience.com.

**Focus on your research
 Service for life science**

Applications:WB-Western Blot IHC-Immunohistochemistry IF-Immunofluorescence IP-Immunoprecipitation FC-Flow cytometry ChIP-Chromatin Immunoprecipitation Reactivity: H-Human R-Rat M-Mouse Mk-Monkey Dg-Dog Ch-Chicken Hm-Hamster Rb-Rabbit Sh-Sheep Pg-Pig Z-Zebrafish X-Xenopus C-Cow.