

## SARS-COV-2 NP Monoclonal Antibody(2019-nCoV)

### E-AB-V1011

<b>Application</b>	ELISA	<b>Host</b>	Human
<b>Storage</b>	Store at -20°C. Avoid freeze / thaw cycles.	<b>Clone No.</b>	6G9

**Important Note** Centrifuge before opening to ensure complete recovery of vial contents.

### Product Details

<b>Immunogen</b>	Recombinant 2019-nCoV Nucleocapsid Protein
<b>Isotype</b>	IgG1
<b>Host</b>	Human
<b>Clone No.</b>	6G9
<b>Reactivity</b>	SARS-COV2
<b>Dilution</b>	ELISA: 1:5,000-1:10,000
<b>Storage Buffer</b>	PBS, pH 7.4
<b>Stability &amp; Storage</b>	Ships on ice packs. Store at -20°C
<b>Description</b>	It is a chimeric monoclonal antibody combining the constant domains of the human IgG1 molecule with mouse variable regions. The variable region was obtained from a mouse immunized with purified Recombinant 2019-nCoV Nucleocapsid Protein. The antibody was

### Antigen Infomation

<b>Alternate Names</b>	coronavirus NP,coronavirus Nucleocapsid,coronavirus Nucleoprotein,cov np,ncov NP,novel coronavirus NP,novel coronavirus Nucleocapsid,novel coronavirus Nucleoprotein,NP,Nucleocapsid,Nucleoprotein Antibody
<b>Background</b>	Coronavirus N protein is required for coronavirus RNA synthesis, and has RNA chaperone activity that may be involved in template switch. Nucleocapsid protein is a most abundant protein of coronavirus. N protein packages the positive strand viral genome RNA into a helical ribonucleocapsid (RNP) and plays a fundamental role during virion assembly through its interactions with the viral genome and membrane protein M. Plays an important role in enhancing the efficiency of subgenomic viral RNA transcription as well as viral replication. Because of the conservation of N protein sequence and its strong immunogenicity, the N protein of coronavirus is chosen as a diagnostic tool.

#### For Research Use Only

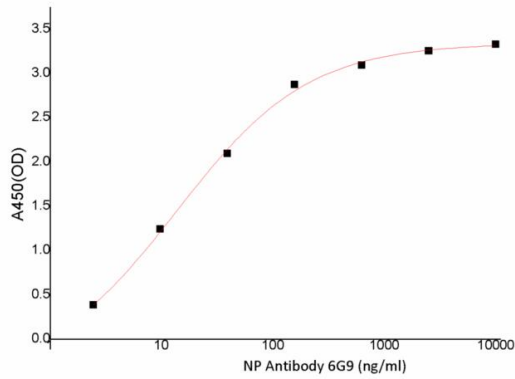
Thank you for your recent purchase.

If you would like to learn more about antibodies,please visit [www.elabscience.com](http://www.elabscience.com).

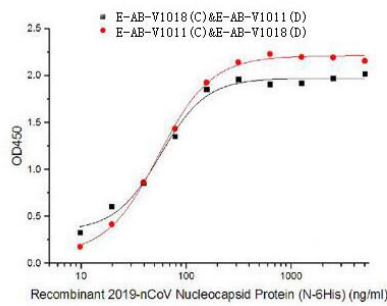
**Focus on your research  
 Service for life science**

Applications:Activ- Activation; Block- Blocking; Separation- Cell Separation ; Cell Sep-Neg- Cell Separation by Negative Selection; FA- Functional Assay; Neut- Neutralization; Stim- Stimulation; FCM- Flow Cytometry; ICFM: Intracellular Staining for Flow Cytometry; WB- Western Blotting; IHC- Immunohistochemistry; IF- Immunofluorescence; IP- Immunoprecipitation

## Images



Immobilized 2019-nCoV Nucleocapsid Protein at 5.0 ug/mL (100 uL/well) can bind SARS-CoV2-NP Antibody (6G9) , the EC50 is less than 13.78 ng/mL.



Capture Antibody	Detection Antibody	ED50
E-AB-V1011[6G9]	E-AB-V1018[4A6]	53.8ng/mL
E-AB-V1018[4A6]	E-AB-V1011[6G9]	57.0ng/mL

### For Research Use Only

Thank you for your recent purchase.

If you would like to learn more about antibodies, please visit [www.elabscience.com](http://www.elabscience.com).

**Focus on your research  
 Service for life science**

Applications: Activ- Activation; Block- Blocking; Separation- Cell Separation ; Cell Sep-Neg- Cell Separation by Negative Selection; FA- Functional Assay; Neut- Neutralization; Stim- Stimulation; FCM- Flow Cytometry; ICFM: Intracellular Staining for Flow Cytometry; WB- Western Blotting; IHC- Immunohistochemistry; IF- Immunofluorescence; IP- Immunoprecipitation