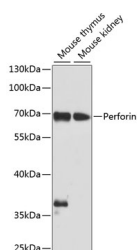


Perforin Polyclonal Antibody

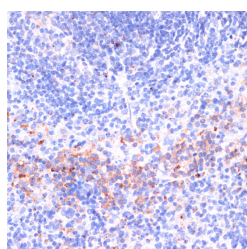
| | | | |
|---------------------|---|-------------------|--------|
| Catalog No. | E-AB-65660 | Reactivity | H,M,R |
| Storage | Store at -20°C. Avoid freeze / thaw cycles. | Host | Rabbit |
| Applications | WB,IHC,IF | Isotype | IgG |

Note: Centrifuge before opening to ensure complete recovery of vial contents.

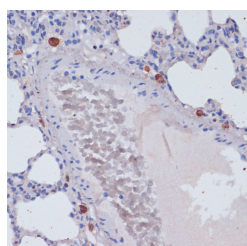
Images



Western blot analysis of extracts of various cell lines using Perforin Polyclonal Antibody at dilution of 1:1000.



Immunohistochemistry of paraffin-embedded Mouse spleen using Perforin Polyclonal Antibody at dilution of 1:100 (40x lens).



Immunohistochemistry of paraffin-embedded Rat lung using Perforin Polyclonal Antibody at dilution of 1:100 (40x lens).

Immunogen Information

| | |
|------------------|--|
| Immunogen | Recombinant fusion protein of human Perforin (NP_001076585.1). |
| GeneID | 5551 |
| Swissprot | P14222 |
| Synonyms | PRF1,FLH2,HPLH2,P1,PFN1,PFPP,perforin-1,Perforin |

Product Information

| | |
|----------------------|---|
| Calculated MW | 61kDa |
| Observed MW | 70kDa |
| Buffer | PBS with 0.02% sodium azide, 50% glycerol, pH7.3. |
| Purify | Affinity purification |
| Dilution | WB 1:500-1:2000 IHC 1:50-1:200 IF 1:50-1:200 |

Background

The protein encoded by this gene has structural and functional similarities to complement component 9 (C9). Like C9, this protein creates transmembrane tubules and is capable of lysing non-specifically a variety of target cells. This protein is one of the main cytolytic proteins of cytolytic granules, and it is known to be a key effector molecule for T-cell- and natural killer-cell-mediated cytotoxicity. Defects in this gene cause familial hemophagocytic lymphohistiocytosis type 2 (HPLH2), a rare and lethal autosomal recessive disorder of early childhood. Alternative splicing results in multiple transcript variants encoding the same protein.

For Research Use Only

Thank you for your recent purchase.
 If you would like to learn more about antibodies, please visit www.elabscience.com.

**Focus on your research
 Service for life science**

Applications:WB-Western Blot IHC-Immunohistochemistry IF-Immunofluorescence IP-Immunoprecipitation FC-Flow cytometry ChIP-Chromatin Immunoprecipitation Reactivity: H-Human R-Rat M-Mouse Mk-Monkey Dg-Dog Ch-Chicken Hm-Hamster Rb-Rabbit Sh-Sheep Pg-Pig Z-Zebrafish X-Xenopus C-Cow.