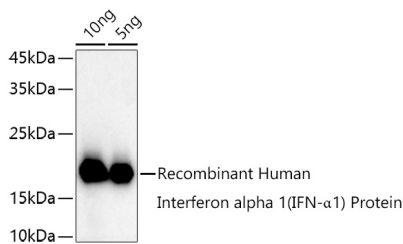


IFNA1 Polyclonal Antibody

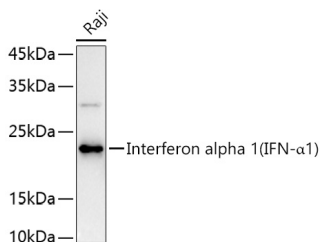
Catalog No.	E-AB-65676	Reactivity	H,M,R
Storage	Store at -20°C. Avoid freeze / thaw cycles.	Host	Rabbit
Applications	WB	Isotype	IgG

Note: Centrifuge before opening to ensure complete recovery of vial contents.

Images



Western blot analysis of extracts of Recombinant Human Interferon alpha 1 (IFN- α 1) Protein using Interferon alpha 1 (IFN- α 1) Polyclonal Antibody at 1:1000 dilution.



Western blot analysis of extracts of Raji cells using Interferon alpha 1 (IFN- α 1) Polyclonal Antibody at 1:1000 dilution.

Immunogen Information

Immunogen	Recombinant fusion protein of human IFNA1
GeneID	3439
Swissprot	P01562
Synonyms	IFNA1,IFL,IFN,IFN-ALPHA,IFN-alphaD,IFNA13,IFNA

Product Information

Calculated MW	21kDa
Observed MW	18KDa/22KDa
Buffer	PBS with 0.05% proclin300,50% glycerol,pH7.3.
Purify	Affinity purification
Dilution	WB 1:500-1:2000

Background

The protein encoded by this gene is produced by macrophages and has antiviral activity. This gene is intronless and the encoded protein is secreted.

For Research Use Only

Thank you for your recent purchase.
 If you would like to learn more about antibodies, please visit www.elabscience.com.

**Focus on your research
 Service for life science**

Applications:WB-Western Blot IHC-Immunohistochemistry IF-Immunofluorescence IP-Immunoprecipitation FC-Flow cytometry ChIP-Chromatin Immunoprecipitation Reactivity: H-Human R-Rat M-Mouse Mk-Monkey Dg-Dog Ch-Chicken Hm-Hamster Rb-Rabbit Sh-Sheep Pg-Pig Z-Zebrafish X-Xenopus C-Cow.