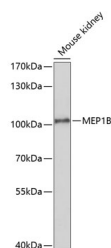


## MEP1B Polyclonal Antibody

<b>Catalog No.</b>	E-AB-65731	<b>Reactivity</b>	M
<b>Storage</b>	Store at -20°C. Avoid freeze / thaw cycles.	<b>Host</b>	Rabbit
<b>Applications</b>	WB	<b>Isotype</b>	IgG

**Note:** Centrifuge before opening to ensure complete recovery of vial contents.

### Images



Western blot analysis of extracts of Mouse kidney using MEP1B Polyclonal Antibody at dilution of 1:1000.

### Immunogen Information

<b>Immunogen</b>	Recombinant fusion protein of human MEP1B (NP_005916.2).
<b>GeneID</b>	4225
<b>Swissprot</b>	Q16820
<b>Synonyms</b>	MEP1B

### Product Information

<b>Calculated MW</b>	79kDa
<b>Observed MW</b>	105kDa
<b>Buffer</b>	PBS with 0.02% sodium azide, 50% glycerol, pH7.3.
<b>Purify</b>	Affinity purification
<b>Dilution</b>	WB 1:500-1:1000

### Background

Meprins are multidomain zinc metalloproteases that are highly expressed in mammalian kidney and intestinal brush border membranes, and in leukocytes and certain cancer cells. They are involved in the hydrolysis of a variety of peptide and protein substrates, and have been implicated in cancer and intestinal inflammation. Mature meprins are oligomers of evolutionarily related, but separately encoded alpha and/or beta subunits. Homooligomers of alpha subunit are secreted, whereas, oligomers containing the beta subunit are plasma membrane-bound. This gene encodes the beta subunit. Targeted disruption of this gene in mice affects embryonic viability, renal gene expression profiles, and distribution of the membrane-associated alpha subunit in kidney and intestine.

#### For Research Use Only

Thank you for your recent purchase.  
 If you would like to learn more about antibodies, please visit [www.elabscience.com](http://www.elabscience.com).

**Focus on your research**  
**Service for life science**

Applications:WB-Western Blot IHC-Immunohistochemistry IF-Immunofluorescence IP-Immunoprecipitation FC-Flow cytometry ChIP-Chromatin Immunoprecipitation Reactivity: H-Human R-Rat M-Mouse Mk-Monkey Dg-Dog Ch-Chicken Hm-Hamster Rb-Rabbit Sh-Sheep Pg-Pig Z-Zebrafish X-Xenopus C-Cow.