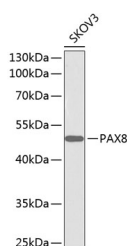


PAX8 Polyclonal Antibody

Catalog No.	E-AB-65732	Reactivity	H,M,R
Storage	Store at -20°C. Avoid freeze / thaw cycles.	Host	Rabbit
Applications	WB	Isotype	IgG

Note: Centrifuge before opening to ensure complete recovery of vial contents.

Images



Western blot analysis of extracts of various cell lines using PAX8 Polyclonal Antibody at 1:1000 dilution.

Immunogen Information

Immunogen	Recombinant fusion protein of human PAX8
GeneID	7849
Swissprot	Q06710
Synonyms	PAX8

Product Information

Calculated MW	31kDa/34kDa/41kDa/43kDa/48kDa
Observed MW	48kDa
Buffer	PBS with 0.05% proclin300,50% glycerol,pH7.3.
Purify	Affinity purification
Dilution	WB 1:500-1:1000

Background

This gene encodes a member of the paired box (PAX) family of transcription factors. Members of this gene family typically encode proteins that contain a paired box domain, an octapeptide, and a paired-type homeodomain. This nuclear protein is involved in thyroid follicular cell development and expression of thyroid-specific genes. Mutations in this gene have been associated with thyroid dysgenesis, thyroid follicular carcinomas and atypical follicular thyroid adenomas. Alternatively spliced transcript variants encoding different isoforms have been described.

For Research Use Only

Thank you for your recent purchase.
 If you would like to learn more about antibodies, please visit www.elabscience.com.

**Focus on your research
 Service for life science**

Applications:WB-Western Blot IHC-Immunohistochemistry IF-Immunofluorescence IP-Immunoprecipitation FC-Flow cytometry ChIP-Chromatin Immunoprecipitation Reactivity: H-Human R-Rat M-Mouse Mk-Monkey Dg-Dog Ch-Chicken Hm-Hamster Rb-Rabbit Sh-Sheep Pg-Pig Z-Zebrafish X-Xenopus C-Cow.