

ZCCHC4 Polyclonal Antibody

Catalog No. E-AB-65738

Note: Centrifuge before opening to ensure complete recovery of vial contents.

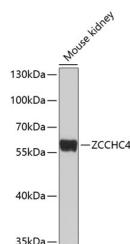
Description

Reactivity	Mouse
Immunogen	Recombinant fusion protein of human ZCCHC4 (NP_079212.2).
Host	Rabbit
Isotype	IgG
Purification	Affinity purification
Conjugation	Unconjugated
Buffer	PBS with 0.02% sodium azide, 50% glycerol, pH7.3.

Applications Recommended Dilution

WB 1:500-1:2000

Data



Western blot analysis of extracts of Mouse kidney using ZCCHC4 Polyclonal Antibody at dilution of 1:1000.

Observed Mw:59kDa

Calculated Mw:25kDa/58kDa/59kDa

Preparation & Storage

Storage Store at -20°C. Avoid freeze / thaw cycles.

Background

ZCCHC4 (Zinc Finger CCHC-Type Containing 4) is a Protein Coding gene. Diseases associated with ZCCHC4 include Miyoshi Muscular Dystrophy 3. Gene Ontology (GO) annotations related to this gene include nucleic acid binding and methyltransferase activity.

For Research Use Only