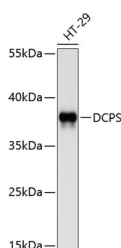


## DCPS Polyclonal Antibody

<b>Catalog No.</b>	E-AB-65756	<b>Reactivity</b>	H
<b>Storage</b>	Store at -20°C. Avoid freeze / thaw cycles.	<b>Host</b>	Rabbit
<b>Applications</b>	WB	<b>Isotype</b>	IgG

**Note:** Centrifuge before opening to ensure complete recovery of vial contents.

### Images



Western blot analysis of extracts of HT-29 cells using DCPS Polyclonal Antibody at dilution of 1:1000.

### Immunogen Information

<b>Immunogen</b>	Recombinant fusion protein of human DCPS (NP_054745.1).
<b>GeneID</b>	28960
<b>Swissprot</b>	Q96C86
<b>Synonyms</b>	DCPS,ARS,DCS1,HINT-5,HINT5,HSL1,HSPC015

### Product Information

<b>Calculated MW</b>	38kDa
<b>Observed MW</b>	38kDa
<b>Buffer</b>	PBS with 0.02% sodium azide, 50% glycerol, pH7.3.
<b>Purify</b>	Affinity purification
<b>Dilution</b>	WB 1:1000-1:2000

### Background

This gene encodes a member of the histidine triad family of pyrophosphatases that removes short mRNA fragments containing the 5' mRNA cap structure, which appear in the 3' → 5' mRNA decay pathway, following deadenylation and exosome-mediated turnover. This enzyme hydrolyzes the triphosphate linkage of the cap structure (7-methylguanosine nucleoside triphosphate) to yield 7-methylguanosine monophosphate and nucleoside diphosphate. It protects the cell from the potentially toxic accumulation of these short, capped mRNA fragments, and regulates the activity of other cap-binding proteins, which are inhibited by their accumulation. It also acts as a transcript-specific modulator of pre-mRNA splicing and microRNA turnover.

#### For Research Use Only

Thank you for your recent purchase.  
 If you would like to learn more about antibodies, please visit [www.elabscience.com](http://www.elabscience.com).

**Focus on your research  
 Service for life science**

Applications:WB-Western Blot IHC-Immunohistochemistry IF-Immunofluorescence IP-Immunoprecipitation FC-Flow cytometry ChIP-Chromatin Immunoprecipitation Reactivity: H-Human R-Rat M-Mouse Mk-Monkey Dg-Dog Ch-Chicken Hm-Hamster Rb-Rabbit Sh-Sheep Pg-Pig Z-Zebrafish X-Xenopus C-Cow.