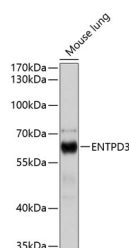


ENTPD3 Polyclonal Antibody

Catalog No.	E-AB-65768	Reactivity	M
Storage	Store at -20°C. Avoid freeze / thaw cycles.	Host	Rabbit
Applications	WB	Isotype	IgG

Note: Centrifuge before opening to ensure complete recovery of vial contents.

Images



Western blot analysis of extracts of Mouse lung using ENTPD3 Polyclonal Antibody at dilution of 1:1000.

Immunogen Information

Immunogen	Recombinant fusion protein of human ENTPD3 (NP_001278890.1).
GeneID	956
Swissprot	O75355
Synonyms	ENTPD3,CD39L3,HB6,NTPDase-3

Product Information

Calculated MW	50kDa/59kDa
Observed MW	59kDa
Buffer	PBS with 0.02% sodium azide, 50% glycerol, pH7.3.
Purify	Affinity purification
Dilution	WB 1:500-1:2000

Background

This gene encodes a plasma membrane-bound divalent cation-dependent E-type nucleotidase. The encoded protein is involved in the regulation of extracellular levels of ATP by hydrolysis of it and other nucleotides. Multiple transcript variants have been described.

For Research Use Only

Thank you for your recent purchase.
 If you would like to learn more about antibodies, please visit www.elabscience.com.

**Focus on your research
 Service for life science**

Applications:WB-Western Blot IHC-Immunohistochemistry IF-Immunofluorescence IP-Immunoprecipitation FC-Flow cytometry ChIP-Chromatin Immunoprecipitation Reactivity: H-Human R-Rat M-Mouse Mk-Monkey Dg-Dog Ch-Chicken Hm-Hamster Rb-Rabbit Sh-Sheep Pg-Pig Z-Zebrafish X-Xenopus C-Cow.