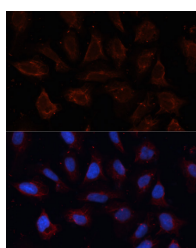


## ANO1 Polyclonal Antibody

<b>Catalog No.</b>	E-AB-65774	<b>Reactivity</b>	H,M,R
<b>Storage</b>	Store at -20°C. Avoid freeze / thaw cycles.	<b>Host</b>	Rabbit
<b>Applications</b>	IF	<b>Isotype</b>	IgG

**Note:** Centrifuge before opening to ensure complete recovery of vial contents.

### Images



Immunofluorescence analysis of U2OS cells using ANO1 Polyclonal Antibody at dilution of 1:100. Blue: DAPI for nuclear staining.

### Immunogen Information

<b>Immunogen</b>	Recombinant fusion protein of human ANO1 (NP_060513.5).
<b>GeneID</b>	55107
<b>Swissprot</b>	Q5XXA6
<b>Synonyms</b>	ANO1,DOG1,ORAOV2,TAOS2,TMEM16A

### Product Information

<b>Buffer</b>	PBS with 0.02% sodium azide, 50% glycerol, pH7.3.
<b>Purify</b>	Affinity purification
<b>Dilution</b>	IF 1:100-1:200

### Background

TMEM16A, also known as DOG1, ORAOV2, TAOS2 or ANO1 (anoctamin 1), is a 986 amino acid multi-pass membrane protein that localizes to both the cell membrane and the cytoplasm and belongs to the anoctamin family. Expressed in a variety of tissues with highest expression in skeletal muscle and liver, TMEM16A functions as a calcium-activated chloride channel that is required for normal tracheal development. Human TMEM16A shares 90% sequence identity with its mouse counterpart, suggesting a conserved role between species. TMEM16A is present in breast, pancreatic, gastric, and uterine cancers, as well as in neck, ovarian and parathyroid tumors, suggesting a role for TMEM16A in carcinogenesis. Three isoforms of TMEM16A exist due to alternative splicing events.

#### For Research Use Only

Thank you for your recent purchase.  
 If you would like to learn more about antibodies, please visit [www.elabscience.com](http://www.elabscience.com).

**Focus on your research  
 Service for life science**

Applications:WB-Western Blot IHC-Immunohistochemistry IF-Immunofluorescence IP-Immunoprecipitation FC-Flow cytometry ChIP-Chromatin Immunoprecipitation Reactivity: H-Human R-Rat M-Mouse Mk-Monkey Dg-Dog Ch-Chicken Hm-Hamster Rb-Rabbit Sh-Sheep Pg-Pig Z-Zebrafish X-Xenopus C-Cow.