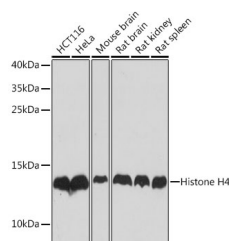


## Histone H4 Polyclonal Antibody

<b>Catalog No.</b>	E-AB-65813	<b>Reactivity</b>	H,M,R,Other (Wide Range)
<b>Storage</b>	Store at -20°C. Avoid freeze / thaw cycles.	<b>Host</b>	Rabbit
<b>Applications</b>	WB	<b>Isotype</b>	IgG

**Note:** Centrifuge before opening to ensure complete recovery of vial contents.

### Images



Western blot analysis of various lysates using Histone H4 Polyclonal Antibody at N703-4 dilution.

### Immunogen Information

<b>Immunogen</b>	Recombinant fusion protein of human Histone H4
<b>GeneID</b>	8359
<b>Swissprot</b>	P62805
<b>Synonyms</b>	H4FA,Histone H4,HIST1H4A,HIST4H4,H4/p

### Product Information

<b>Calculated MW</b>	11kDa
<b>Observed MW</b>	11kDa
<b>Buffer</b>	PBS with 0.01% thiomersal,50% glycerol,pH7.3.
<b>Purify</b>	Affinity purification
<b>Dilution</b>	WB 1:500-1:2000

### Background

Histones are basic nuclear proteins that are responsible for the nucleosome structure of the chromosomal fiber in eukaryotes. Nucleosomes consist of approximately 146 bp of DNA wrapped around a histone octamer composed of pairs of each of the four core histones (H2A, H2B, H3, and H4). The chromatin fiber is further compacted through the interaction of a linker histone, H1, with the DNA between the nucleosomes to form higher order chromatin structures. This gene is intronless and encodes a replication-dependent histone that is a member of the histone H4 family. Transcripts from this gene lack polyA tails; instead, they contain a palindromic termination element.

#### For Research Use Only

Thank you for your recent purchase.  
 If you would like to learn more about antibodies, please visit [www.elabscience.com](http://www.elabscience.com).

**Focus on your research  
 Service for life science**

Applications:WB-Western Blot IHC-Immunohistochemistry IF-Immunofluorescence IP-Immunoprecipitation FC-Flow cytometry ChIP-Chromatin Immunoprecipitation Reactivity: H-Human R-Rat M-Mouse Mk-Monkey Dg-Dog Ch-Chicken Hm-Hamster Rb-Rabbit Sh-Sheep Pg-Pig Z-Zebrafish X-Xenopus C-Cow.