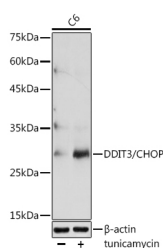


## DDIT3 / CHOP Polyclonal Antibody

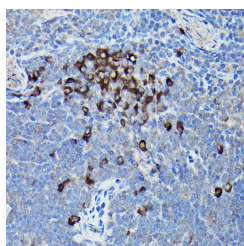
<b>Catalog No.</b>	E-AB-65815	<b>Reactivity</b>	M,R
<b>Storage</b>	Store at -20°C. Avoid freeze / thaw cycles.	<b>Host</b>	Rabbit
<b>Applications</b>	WB,IHC	<b>Isotype</b>	IgG

**Note:** Centrifuge before opening to ensure complete recovery of vial contents.

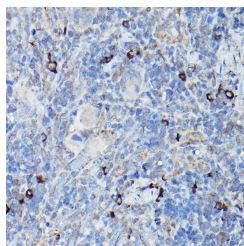
### Images



Western blot analysis of extracts of C6 cells using DDIT3/CHOP Polyclonal Antibody at 1:1000 dilution. C6 cells were treated by tunicamycin (2 µg/ml) for 8 hours.



Immunohistochemistry of paraffin-embedded mouse spleen using DDIT3/CHOP Polyclonal Antibody at dilution of 1:200 (40x lens). Perform high pressure antigen retrieval with 10 mM citrate buffer pH 6.0 before commencing with IHC staining protocol.



Immunohistochemistry of paraffin-embedded rat spleen using DDIT3/CHOP Polyclonal antibody at

### For Research Use Only

Thank you for your recent purchase.  
 If you would like to learn more about antibodies, please visit [www.elabscience.com](http://www.elabscience.com).

### Immunogen Information

<b>Immunogen</b>	Recombinant fusion protein of human DDIT3 / CHOP
<b>GeneID</b>	1649
<b>Swissprot</b>	P35638
<b>Synonyms</b>	DDIT3,CEBPZ,CHOP,CHOP-10,CHOP10,GADD153,C/EBPzeta,DDIT3 / CHOP

### Product Information

<b>Calculated MW</b>	19kDa/21kDa
<b>Observed MW</b>	30kDa
<b>Buffer</b>	PBS with 0.01% thiomersal, 50% glycerol, pH 7.3.
<b>Purify</b>	Affinity purification
<b>Dilution</b>	WB 1:500-1:2000, IHC 1:50-1:200

### Background

This gene encodes a member of the CCAAT/enhancer-binding protein (C/EBP) family of transcription factors. The protein functions as a dominant-negative inhibitor by forming heterodimers with other C/EBP members, such as C/EBP and LAP (liver activator protein), and preventing their DNA binding activity. The protein is implicated in adipogenesis and erythropoiesis, is activated by endoplasmic reticulum stress, and promotes apoptosis. Fusion of this gene and FUS on chromosome 16 or EWSR1 on chromosome 22 induced by translocation generates chimeric proteins in myxoid liposarcomas or Ewing sarcoma. Multiple alternatively spliced transcript variants encoding two isoforms with different length have been identified.

**Focus on your research  
 Service for life science**

dilution of 1:200 (40x lens).Perform high pressure antigen retrieval with 10 mM citrate buffer pH 6.0 before commencing with IHC staining protocol.

## For Research Use Only

Thank you for your recent purchase.

If you would like to learn more about antibodies, please visit [www.elabscience.com](http://www.elabscience.com).

**Focus on your research  
Service for life science**

Applications:WB-Western Blot IHC-Immunohistochemistry IF-Immunofluorescence IP-Immunoprecipitation FC-Flow cytometry CHIP-Chromatin Immunoprecipitation Reactivity: H-Human R-Rat M-Mouse Mk-Monkey Dg-Dog Ch-Chicken Hm-Hamster Rb-Rabbit Sh-Sheep Pg-Pig Z-Zebrafish X-Xenopus C-Cow.