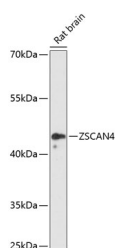


## ZSCAN4 Polyclonal Antibody

<b>Catalog No.</b>	E-AB-65864	<b>Reactivity</b>	M,R
<b>Storage</b>	Store at -20°C. Avoid freeze / thaw cycles.	<b>Host</b>	Rabbit
<b>Applications</b>	WB	<b>Isotype</b>	IgG

**Note:** Centrifuge before opening to ensure complete recovery of vial contents.

### Images



Western blot analysis of extracts of Rat brain using ZSCAN4 Polyclonal Antibody at dilution of 1:3000.

### Immunogen Information

<b>Immunogen</b>	Recombinant fusion protein of human ZSCAN4 (NP_689890.1).
<b>GeneID</b>	201516
<b>Swissprot</b>	Q8NAM6
<b>Synonyms</b>	ZSCAN4,ZNF494

### Product Information

<b>Calculated MW</b>	48kDa
<b>Observed MW</b>	49kDa
<b>Buffer</b>	PBS with 0.02% sodium azide, 50% glycerol, pH7.3.
<b>Purify</b>	Affinity purification
<b>Dilution</b>	WB 1:500-1:2000

### Background

The ZSCAN4 gene encodes a protein involved in telomere maintenance and with a key role in the critical feature of mouse embryonic stem (ES) cells, namely, defying cellular senescence and maintaining normal karyotype for many cell divisions in culture.

#### For Research Use Only

Thank you for your recent purchase.

If you would like to learn more about antibodies, please visit [www.elabscience.com](http://www.elabscience.com).

**Focus on your research  
 Service for life science**

Applications: WB-Western Blot IHC-Immunohistochemistry IF-Immunofluorescence IP-Immunoprecipitation FC-Flow cytometry ChIP-Chromatin Immunoprecipitation Reactivity: H-Human R-Rat M-Mouse Mk-Monkey Dg-Dog Ch-Chicken Hm-Hamster Rb-Rabbit Sh-Sheep Pg-Pig Z-Zebrafish X-Xenopus C-Cow.