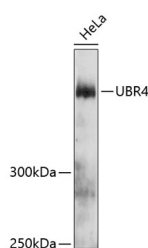


UBR4 Polyclonal Antibody

Catalog No.	E-AB-65879	Reactivity	H
Storage	Store at -20°C. Avoid freeze / thaw cycles.	Host	Rabbit
Applications	WB	Isotype	IgG

Note: Centrifuge before opening to ensure complete recovery of vial contents.

Images



Western blot analysis of extracts of HeLa cells using UBR4 Polyclonal Antibody at dilution of 1:3000.

Immunogen Information

Immunogen	Recombinant fusion protein of human UBR4 (NP_065816.2).
GeneID	23352
Swissprot	Q5T4S7
Synonyms	UBR4,RBAF600,ZUBR1,p600

Product Information

Calculated MW	23kDa/270kDa/571kDa/573kDa/575kDa
Observed MW	600kDa
Buffer	PBS with 0.02% sodium azide, 50% glycerol, pH7.3.
Purify	Affinity purification
Dilution	WB 1:500-1:1000

Background

The protein encoded by this gene is an E3 ubiquitin-protein ligase that interacts with the retinoblastoma-associated protein in the nucleus and with calcium-bound calmodulin in the cytoplasm. The encoded protein appears to be a cytoskeletal component in the cytoplasm and part of the chromatin scaffold in the nucleus. In addition, this protein is a target of the human papillomavirus type 16 E7 oncoprotein.

For Research Use Only

Thank you for your recent purchase.
 If you would like to learn more about antibodies, please visit www.elabscience.com.

**Focus on your research
 Service for life science**

Applications:WB-Western Blot IHC-Immunohistochemistry IF-Immunofluorescence IP-Immunoprecipitation FC-Flow cytometry ChIP-Chromatin Immunoprecipitation Reactivity: H-Human R-Rat M-Mouse Mk-Monkey Dg-Dog Ch-Chicken Hm-Hamster Rb-Rabbit Sh-Sheep Pg-Pig Z-Zebrafish X-Xenopus C-Cow.