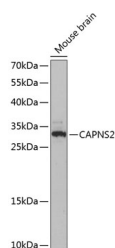


CAPNS2 Polyclonal Antibody

Catalog No.	E-AB-65905	Reactivity	M
Storage	Store at -20°C. Avoid freeze / thaw cycles.	Host	Rabbit
Applications	WB	Isotype	IgG

Note: Centrifuge before opening to ensure complete recovery of vial contents.

Images



Western blot analysis of extracts of Mouse brain using CAPNS2 Polyclonal Antibody at dilution of 1:3000.

Immunogen Information

Immunogen	Recombinant fusion protein of human CAPNS2 (NP_115706.1).
GeneID	84290
Swissprot	Q96L46
Synonyms	CAPNS2,CSS2

Product Information

Calculated MW	27kDa
Observed MW	32kDa
Buffer	PBS with 0.02% sodium azide, 50% glycerol, pH7.3.
Purify	Affinity purification
Dilution	WB 1:200-1:500

Background

CAPNS2 (Calpain Small Subunit 2) is a Protein Coding gene. Diseases associated with CAPNS2 include Coffin-Siris Syndrome 2 and Coffin-Siris Syndrome 1. Among its related pathways are Degradation of the extracellular matrix and Neurodegenerative Diseases. Gene Ontology (GO) annotations related to this gene include calcium ion binding and calcium-dependent cysteine-type endopeptidase activity. An important paralog of this gene is CAPNS1.

For Research Use Only

Thank you for your recent purchase.
 If you would like to learn more about antibodies, please visit www.elabscience.com.

**Focus on your research
 Service for life science**

Applications:WB-Western Blot IHC-Immunohistochemistry IF-Immunofluorescence IP-Immunoprecipitation FC-Flow cytometry ChIP-Chromatin Immunoprecipitation Reactivity: H-Human R-Rat M-Mouse Mk-Monkey Dg-Dog Ch-Chicken Hm-Hamster Rb-Rabbit Sh-Sheep Pg-Pig Z-Zebrafish X-Xenopus C-Cow.