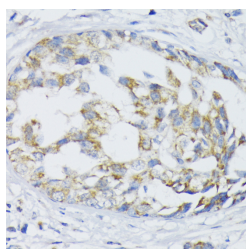


## SLC30A1 Polyclonal Antibody

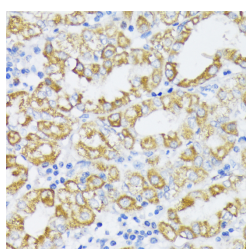
<b>Catalog No.</b>	E-AB-65925	<b>Reactivity</b>	H,R
<b>Storage</b>	Store at -20°C. Avoid freeze / thaw cycles.	<b>Host</b>	Rabbit
<b>Applications</b>	IHC	<b>Isotype</b>	IgG

**Note:** Centrifuge before opening to ensure complete recovery of vial contents.

### Images



Immunohistochemistry of paraffin-embedded Human mammary cancer using SLC30A1 Polyclonal Antibody at dilution of 1:100 (40x lens).



Immunohistochemistry of paraffin-embedded Human stomach using SLC30A1 Polyclonal Antibody at dilution of 1:100 (40x lens).

### Immunogen Information

<b>Immunogen</b>	A synthetic peptide of human SLC30A1 (NP_067017.2).
<b>GeneID</b>	7779
<b>Swissprot</b>	Q9Y6M5
<b>Synonyms</b>	SLC30A1,ZNT1,ZRC1

### Product Information

<b>Buffer</b>	PBS with 0.02% sodium azide, 50% glycerol, pH7.3.
<b>Purify</b>	Affinity purification
<b>Dilution</b>	IHC 1:50-1:200

### Background

SLC30A1 (Solute Carrier Family 30 Member 1) is a Protein Coding gene. Diseases associated with SLC30A1 include Acrodermatitis Enteropathica, Zinc-Deficiency Type and Epidermodysplasia Verruciformis 1. Among its related pathways are Metal ion SLC transporters and Mineral absorption. Gene Ontology (GO) annotations related to this gene include cation transmembrane transporter activity and calcium channel inhibitor activity. An important paralog of this gene is SLC30A10.

#### For Research Use Only

Thank you for your recent purchase.  
 If you would like to learn more about antibodies, please visit [www.elabscience.com](http://www.elabscience.com).

**Focus on your research  
 Service for life science**

Applications:WB-Western Blot IHC-Immunohistochemistry IF-Immunofluorescence IP-Immunoprecipitation FC-Flow cytometry ChIP-Chromatin Immunoprecipitation Reactivity: H-Human R-Rat M-Mouse Mk-Monkey Dg-Dog Ch-Chicken Hm-Hamster Rb-Rabbit Sh-Sheep Pg-Pig Z-Zebrafish X-Xenopus C-Cow.