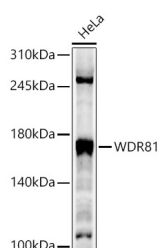


WDR81 Polyclonal Antibody

Catalog No.	E-AB-65965	Reactivity	H,M,R
Storage	Store at -20°C. Avoid freeze / thaw cycles.	Host	Rabbit
Applications	WB	Isotype	IgG

Note: Centrifuge before opening to ensure complete recovery of vial contents.

Images



Western blot analysis of HeLa using WDR81 Polyclonal Antibody at 1:500 dilution.

Immunogen Information

Immunogen	Recombinant fusion protein of human WDR81
GeneID	124997
Swissprot	Q562E7
Synonyms	WDR81,CAMRQ2,PPP1R166,SORF-2

Product Information

Calculated MW	74kDa/77kDa/79kDa/95kDa/197kDa/211kDa
Observed MW	260KDa
Buffer	PBS with 0.05% proclin300,50% glycerol,pH7.3.
Purify	Affinity purification
Dilution	WB 1:500-1:2000

Background

This gene encodes a multi-domain transmembrane protein, which is predominantly expressed in the brain. Mutations in this gene are associated with autosomal recessive cerebellar ataxia, mental retardation, and dysequilibrium syndrome-2. Alternatively spliced transcript variants encoding different isoforms have been found for this gene.

For Research Use Only

Thank you for your recent purchase.
 If you would like to learn more about antibodies, please visit www.elabscience.com.

**Focus on your research
 Service for life science**

Applications:WB-Western Blot IHC-Immunohistochemistry IF-Immunofluorescence IP-Immunoprecipitation FC-Flow cytometry ChIP-Chromatin Immunoprecipitation Reactivity: H-Human R-Rat M-Mouse Mk-Monkey Dg-Dog Ch-Chicken Hm-Hamster Rb-Rabbit Sh-Sheep Pg-Pig Z-Zebrafish X-Xenopus C-Cow.