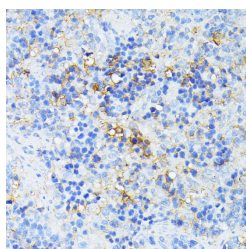


## TP53I11 Polyclonal Antibody

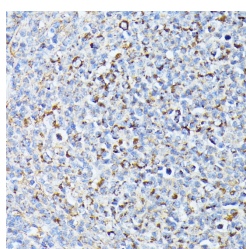
<b>Catalog No.</b>	E-AB-65972	<b>Reactivity</b>	H,M,R
<b>Storage</b>	Store at -20°C. Avoid freeze / thaw cycles.	<b>Host</b>	Rabbit
<b>Applications</b>	IHC	<b>Isotype</b>	IgG

**Note:** Centrifuge before opening to ensure complete recovery of vial contents.

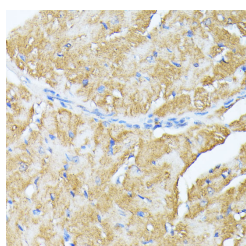
### Images



Immunohistochemistry of paraffin-embedded Rat spleen using TP53I11 Polyclonal Antibody at dilution of 1:100 (40x lens).



Immunohistochemistry of paraffin-embedded Human lymph node tumors using TP53I11 Polyclonal Antibody at dilution of 1:100 (40x lens).



Immunohistochemistry of paraffin-embedded Mouse heart using TP53I11 Polyclonal Antibody at dilution of 1:100 (40x lens).

### Immunogen Information

<b>Immunogen</b>	Recombinant fusion protein of human TP53I11 (NP_001245249.1).
<b>GeneID</b>	9537
<b>Swissprot</b>	O14683
<b>Synonyms</b>	TP53I11,PIG11

### Product Information

<b>Buffer</b>	PBS with 0.02% sodium azide, 50% glycerol, pH7.3.
<b>Purify</b>	Affinity purification
<b>Dilution</b>	IHC 1:50-1:100

### Background

TP53I11 is a 177 amino acid tumor suppressor belonging to the p53-induced protein gene (PIG) family. The PIG gene family encodes redox-controlling proteins that are involved in p53 tumor suppressor activity. It is suggested that PIG11 is involved in arsenic trioxide As(2)O(3)-induced apoptosis in certain cell lines and may play a significant role in tumor suppression through promotion of cell apoptosis. The gene encoding PIG11 maps to human chromosome 11, which houses over 1,400 genes and comprises nearly 4% of the human genome.

#### For Research Use Only

Thank you for your recent purchase.  
 If you would like to learn more about antibodies, please visit [www.elabscience.com](http://www.elabscience.com).

**Focus on your research  
 Service for life science**

Applications:WB-Western Blot IHC-Immunohistochemistry IF-Immunofluorescence IP-Immunoprecipitation FC-Flow cytometry ChIP-Chromatin Immunoprecipitation Reactivity: H-Human R-Rat M-Mouse Mk-Monkey Dg-Dog Ch-Chicken Hm-Hamster Rb-Rabbit Sh-Sheep Pg-Pig Z-Zebrafish X-Xenopus C-Cow.