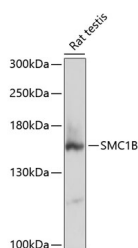


SMC1B Polyclonal Antibody

Catalog No.	E-AB-65980	Reactivity	R
Storage	Store at -20°C. Avoid freeze / thaw cycles.	Host	Rabbit
Applications	WB	Isotype	IgG

Note: Centrifuge before opening to ensure complete recovery of vial contents.

Images



Western blot analysis of extracts of Rat testis using SMC1B Polyclonal Antibody at dilution of 1:3000.

Immunogen Information

Immunogen	Recombinant fusion protein of human SMC1B (NP_001278430.1).
GeneID	27127
Swissprot	Q8NDV3
Synonyms	SMC1B,SMC1BETA,SMC1L2

Product Information

Calculated MW	135kDa/143kDa
Observed MW	144kDa
Buffer	PBS with 0.02% sodium azide, 50% glycerol, pH7.3.
Purify	Affinity purification
Dilution	WB 1:500-1:1000

Background

SMC1B (Structural Maintenance Of Chromosomes 1B) is a Protein Coding gene. Diseases associated with SMC1B include Corneal Dystrophy, Subepithelial Mucinous and 46 Xx Gonadal Dysgenesis. Among its related pathways are Meiosis and Cell Cycle, Mitotic. An important paralog of this gene is SMC1A.

For Research Use Only

Thank you for your recent purchase.
 If you would like to learn more about antibodies, please visit www.elabscience.com.

**Focus on your research
 Service for life science**

Applications:WB-Western Blot IHC-Immunohistochemistry IF-Immunofluorescence IP-Immunoprecipitation FC-Flow cytometry ChIP-Chromatin Immunoprecipitation Reactivity: H-Human R-Rat M-Mouse Mk-Monkey Dg-Dog Ch-Chicken Hm-Hamster Rb-Rabbit Sh-Sheep Pg-Pig Z-Zebrafish X-Xenopus C-Cow.