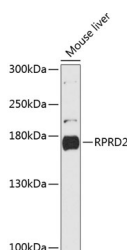


## RPRD2 Polyclonal Antibody

<b>Catalog No.</b>	E-AB-66004	<b>Reactivity</b>	M
<b>Storage</b>	Store at -20°C. Avoid freeze / thaw cycles.	<b>Host</b>	Rabbit
<b>Applications</b>	WB	<b>Isotype</b>	IgG

**Note:** Centrifuge before opening to ensure complete recovery of vial contents.

### Images



Western blot analysis of extracts of Mouse liver using RPRD2 Polyclonal Antibody at dilution of 1:3000.

### Immunogen Information

<b>Immunogen</b>	Recombinant fusion protein of human RPRD2 (NP_001284603.1).
<b>GeneID</b>	23248
<b>Swissprot</b>	Q5VT52
<b>Synonyms</b>	RPRD2,HSPC099,KIAA0460

### Product Information

<b>Calculated MW</b>	17kDa/100kDa/152kDa/156kDa
<b>Observed MW</b>	156kDa
<b>Buffer</b>	PBS with 0.02% sodium azide, 50% glycerol, pH7.3.
<b>Purify</b>	Affinity purification
<b>Dilution</b>	WB 1:500-1:2000

### Background

RPRD2 (Regulation Of Nuclear Pre-mRNA Domain Containing 2) is a Protein Coding gene. Diseases associated with RPRD2 include Retinitis Pigmentosa 30. Among its related pathways are Gene Expression and HIV Transcription Elongation. An important paralog of this gene is RPRD1A.

#### For Research Use Only

Thank you for your recent purchase.  
 If you would like to learn more about antibodies, please visit [www.elabscience.com](http://www.elabscience.com).

**Focus on your research  
 Service for life science**

Applications:WB-Western Blot IHC-Immunohistochemistry IF-Immunofluorescence IP-Immunoprecipitation FC-Flow cytometry ChIP-Chromatin Immunoprecipitation Reactivity: H-Human R-Rat M-Mouse Mk-Monkey Dg-Dog Ch-Chicken Hm-Hamster Rb-Rabbit Sh-Sheep Pg-Pig Z-Zebrafish X-Xenopus C-Cow.