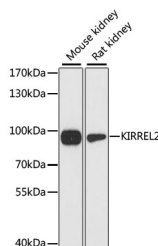


KIRREL2 Polyclonal Antibody

Catalog No.	E-AB-66011	Reactivity	H,M,R
Storage	Store at -20°C. Avoid freeze / thaw cycles.	Host	Rabbit
Applications	WB	Isotype	IgG

Note: Centrifuge before opening to ensure complete recovery of vial contents.

Images



Western blot analysis of extracts of various cell lines using KIRREL2 Polyclonal Antibody at dilution of 1:3000.

Immunogen Information

Immunogen	Recombinant fusion protein of human KIRREL2 (NP_954649.3).
GeneID	84063
Swissprot	Q6UWL6
Synonyms	KIRREL2,FILTRIN,NEPH3,NLG1

Product Information

Calculated MW	23kDa/61kDa/67kDa/75kDa
Observed MW	95kDa
Buffer	PBS with 0.02% sodium azide, 50% glycerol, pH7.3.
Purify	Affinity purification
Dilution	WB 1:1000-1:2000

Background

This gene encodes a type I transmembrane protein and member of the immunoglobulin superfamily of cell adhesion molecules. The encoded protein localizes to adherens junctions in pancreatic beta cells and regulates insulin secretion. Autoantibodies against the encoded protein have been detected in serum from patients with type 1 diabetes. This gene may also play a role in glomerular development and decreased expression of this gene has been observed in human glomerular diseases. This gene and the related opposite-strand gene nephrin (GeneID: 527362) are regulated by a bidirectional promoter.

For Research Use Only

Thank you for your recent purchase.
 If you would like to learn more about antibodies, please visit www.elabscience.com.

**Focus on your research
 Service for life science**

Applications:WB-Western Blot IHC-Immunohistochemistry IF-Immunofluorescence IP-Immunoprecipitation FC-Flow cytometry ChIP-Chromatin Immunoprecipitation Reactivity: H-Human R-Rat M-Mouse Mk-Monkey Dg-Dog Ch-Chicken Hm-Hamster Rb-Rabbit Sh-Sheep Pg-Pig Z-Zebrafish X-Xenopus C-Cow.