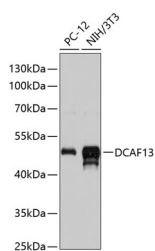


DCAF13 Polyclonal Antibody

Catalog No.	E-AB-66027	Reactivity	H,M,R
Storage	Store at -20°C. Avoid freeze / thaw cycles.	Host	Rabbit
Applications	WB	Isotype	IgG

Note: Centrifuge before opening to ensure complete recovery of vial contents.

Images



Western blot analysis of extracts of various cell lines using DCAF13 Polyclonal Antibody at dilution of 1:3000.

Immunogen Information

Immunogen	Recombinant fusion protein of human DCAF13 (NP_056235.4).
GeneID	25879
Swissprot	Q9NV06
Synonyms	DCAF13,GM83,HSPC064,WDSOF1,Sof1

Product Information

Calculated MW	10kDa/51kDa
Observed MW	51kDa
Buffer	PBS with 0.02% sodium azide, 50% glycerol, pH7.3.
Purify	Affinity purification
Dilution	WB 1:500-1:2000

Background

DCAF13 (DDB1 And CUL4 Associated Factor 13) is a Protein Coding gene. Diseases associated with DCAF13 include Febrile Seizures, Familial, 1 and Familial Adult Myoclonic Epilepsy. Among its related pathways are rRNA processing in the nucleus and cytosol and Gene Expression.

For Research Use Only

Thank you for your recent purchase.
 If you would like to learn more about antibodies, please visit www.elabscience.com.

**Focus on your research
 Service for life science**

Applications:WB-Western Blot IHC-Immunohistochemistry IF-Immunofluorescence IP-Immunoprecipitation FC-Flow cytometry ChIP-Chromatin Immunoprecipitation Reactivity: H-Human R-Rat M-Mouse Mk-Monkey Dg-Dog Ch-Chicken Hm-Hamster Rb-Rabbit Sh-Sheep Pg-Pig Z-Zebrafish X-Xenopus C-Cow.