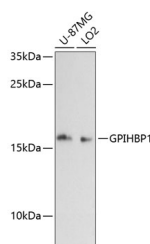


## GPIHBP1 Polyclonal Antibody

<b>Catalog No.</b>	E-AB-66030	<b>Reactivity</b>	H
<b>Storage</b>	Store at -20°C. Avoid freeze / thaw cycles.	<b>Host</b>	Rabbit
<b>Applications</b>	WB	<b>Isotype</b>	IgG

**Note:** Centrifuge before opening to ensure complete recovery of vial contents.

### Images



Western blot analysis of extracts of various cell lines using GPIHBP1 Polyclonal Antibody at dilution of 1:3000.

### Immunogen Information

<b>Immunogen</b>	Recombinant fusion protein of human GPIHBP1 (NP_835466.2).
<b>GeneID</b>	338328
<b>Swissprot</b>	Q8IV16
<b>Synonyms</b>	GPIHBP1,GPI-HBP1,HYPL1D

### Product Information

<b>Calculated MW</b>	19kDa
<b>Observed MW</b>	20kDa
<b>Buffer</b>	PBS with 0.02% sodium azide, 50% glycerol, pH7.3.
<b>Purify</b>	Affinity purification
<b>Dilution</b>	WB 1:500-1:2000

### Background

This gene encodes a capillary endothelial cell protein that facilitates the lipolytic processing of triglyceride-rich lipoproteins. The encoded protein is a glycosylphosphatidylinositol-anchored protein that is a member of the lymphocyte antigen 6 (Ly6) family. This protein plays a major role in transporting lipoprotein lipase (LPL) from the subendothelial spaces to the capillary lumen. Mutations in this gene are the cause of hyperlipoproteinemia, type 1D. Alternate splicing results in multiple transcript variants.

#### For Research Use Only

Thank you for your recent purchase.

If you would like to learn more about antibodies, please visit [www.elabscience.com](http://www.elabscience.com).

**Focus on your research  
 Service for life science**

Applications:WB-Western Blot IHC-Immunohistochemistry IF-Immunofluorescence IP-Immunoprecipitation FC-Flow cytometry ChIP-Chromatin Immunoprecipitation Reactivity: H-Human R-Rat M-Mouse Mk-Monkey Dg-Dog Ch-Chicken Hm-Hamster Rb-Rabbit Sh-Sheep Pg-Pig Z-Zebrafish X-Xenopus C-Cow.