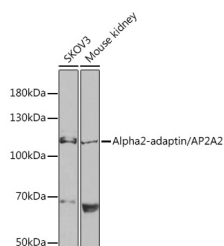


AP2A2 Polyclonal Antibody

Catalog No.	E-AB-66039	Reactivity	H,M
Storage	Store at -20°C. Avoid freeze / thaw cycles.	Host	Rabbit
Applications	WB	Isotype	IgG

Note: Centrifuge before opening to ensure complete recovery of vial contents.

Images



Western blot analysis of extracts of various cell lines using Alpha2-adaptin/AP2A2 Polyclonal Antibody at 1:1000 dilution.

Immunogen Information

Immunogen	Recombinant fusion protein of human AP2A2
GeneID	161
Swissprot	O94973
Synonyms	AP2A2,ADTAB,CLAPA2,HIP-9,HIP9,HYPJ

Product Information

Calculated MW	73kDa/103kDa/104kDa
Observed MW	104kDa
Buffer	PBS with 0.02% sodium azide,50% glycerol,pH7.3.
Purify	Affinity purification
Dilution	WB 1:500-1:2000

Background

The protein encoded by this gene is a subunit of the AP-2 adaptor protein complex, which is involved in linking lipid and protein membrane components with the clathrin lattice. This interaction supports the formation of clathrin-coated vesicles, and the encoded subunit aids in the process by binding polyphosphoinositide-containing lipids in the cell membrane.

For Research Use Only

Thank you for your recent purchase.
 If you would like to learn more about antibodies, please visit www.elabscience.com.

**Focus on your research
 Service for life science**

Applications:WB-Western Blot IHC-Immunohistochemistry IF-Immunofluorescence IP-Immunoprecipitation FC-Flow cytometry ChIP-Chromatin Immunoprecipitation Reactivity: H-Human R-Rat M-Mouse Mk-Monkey Dg-Dog Ch-Chicken Hm-Hamster Rb-Rabbit Sh-Sheep Pg-Pig Z-Zebrafish X-Xenopus C-Cow.