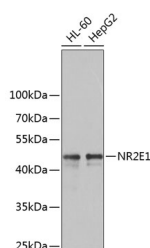


## NR2E1 Polyclonal Antibody

<b>Catalog No.</b>	E-AB-66056	<b>Reactivity</b>	H
<b>Storage</b>	Store at -20°C. Avoid freeze / thaw cycles.	<b>Host</b>	Rabbit
<b>Applications</b>	WB	<b>Isotype</b>	IgG

**Note:** Centrifuge before opening to ensure complete recovery of vial contents.

### Images



Western blot analysis of extracts of various cell lines using NR2E1/TLX Polyclonal Antibody at 1:1000 dilution.

### Immunogen Information

<b>Immunogen</b>	Recombinant fusion protein of human NR2E1
<b>GeneID</b>	7101
<b>Swissprot</b>	Q9Y466
<b>Synonyms</b>	NR2E1, TLL, TLX, XTLL

### Product Information

<b>Calculated MW</b>	42kDa/46kDa
<b>Observed MW</b>	43kDa
<b>Buffer</b>	PBS with 0.02% sodium azide, 50% glycerol, pH7.3.
<b>Purify</b>	Affinity purification
<b>Dilution</b>	WB 1:500-1:2000

### Background

The protein encoded by this gene is an orphan receptor involved in retinal development. The encoded protein also regulates adult neural stem cell proliferation and may be involved in control of aggressive behavior. Two transcript variants encoding different isoforms have been found for this gene.

#### For Research Use Only

Thank you for your recent purchase.

If you would like to learn more about antibodies, please visit [www.elabscience.com](http://www.elabscience.com).

**Focus on your research  
 Service for life science**

Applications: WB-Western Blot IHC-Immunohistochemistry IF-Immunofluorescence IP-Immunoprecipitation FC-Flow cytometry ChIP-Chromatin Immunoprecipitation Reactivity: H-Human R-Rat M-Mouse Mk-Monkey Dg-Dog Ch-Chicken Hm-Hamster Rb-Rabbit Sh-Sheep Pg-Pig Z-Zebrafish X-Xenopus C-Cow.