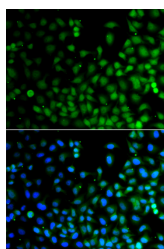


LHX6 Polyclonal Antibody

Catalog No.	E-AB-66066	Reactivity	H
Storage	Store at -20°C. Avoid freeze / thaw cycles.	Host	Rabbit
Applications	IF	Isotype	IgG

Note: Centrifuge before opening to ensure complete recovery of vial contents.

Images



Immunofluorescence analysis of A549 cells using LHX6 Polyclonal Antibody

Immunogen Information

Immunogen	Recombinant fusion protein of human LHX6 (NP_055183.2).
GeneID	26468
Swissprot	Q9UPM6
Synonyms	LHX6,LHX6.1

Product Information

Buffer	PBS with 0.02% sodium azide, 50% glycerol, pH7.3.
Purify	Affinity purification
Dilution	IF 1:50-1:200

Background

This gene encodes a member of a large protein family that contains the LIM domain, a unique cysteine-rich zinc-binding domain. The encoded protein has tandem LIM domains as well as a DNA-binding homeodomain. The protein functions as a transcription factor involved in embryogenesis and head development and is highly expressed in neural crest derived mesenchyme cells. Alternative splicing results in multiple transcript variants encoding distinct isoforms.

For Research Use Only

Thank you for your recent purchase.
 If you would like to learn more about antibodies, please visit www.elabscience.com.

**Focus on your research
 Service for life science**

Applications:WB-Western Blot IHC-Immunohistochemistry IF-Immunofluorescence IP-Immunoprecipitation FC-Flow cytometry ChIP-Chromatin Immunoprecipitation Reactivity: H-Human R-Rat M-Mouse Mk-Monkey Dg-Dog Ch-Chicken Hm-Hamster Rb-Rabbit Sh-Sheep Pg-Pig Z-Zebrafish X-Xenopus C-Cow.