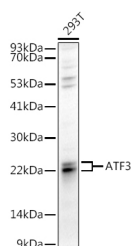


ATF3 Polyclonal Antibody

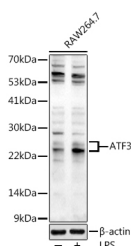
Catalog No.	E-AB-66081	Reactivity	H,M
Storage	Store at -20°C. Avoid freeze / thaw cycles.	Host	Rabbit
Applications	WB,IHC,IF	Isotype	IgG

Note: Centrifuge before opening to ensure complete recovery of vial contents.

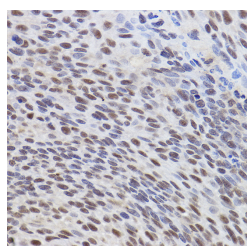
Images



Western blot analysis of extracts of 293T cells using ATF3 Polyclonal Antibody at 1:1000 dilution.



Western blot analysis of extracts of RAW264.7 cells using ATF3 Polyclonal Antibody at 1:1000 dilution. Raw264.7 cells were treated by LPS (1 µg/ml) at 37°C for 8 hours.



Immunohistochemistry of paraffin-embedded human lung cancer using ATF3 Polyclonal antibody at dilution of 1:300 (40x lens). Perform high pressure antigen retrieval with 10 mM citrate buffer pH 6.0 before commencing with IHC staining protocol.

For Research Use Only

Thank you for your recent purchase.
 If you would like to learn more about antibodies, please visit www.elabscience.com.

Immunogen Information

Immunogen	Recombinant fusion protein of human ATF3
GeneID	467
Swissprot	P18847
Synonyms	ATF3

Product Information

Calculated MW	12kDa/13kDa/14kDa/15kDa/20kDa
Observed MW	23kDa/24kDa
Buffer	PBS with 0.02% sodium azide, 50% glycerol, pH7.3.
Purify	Affinity purification
Dilution	WB 1:500-1:2000, IHC 1:50-1:200, IF 1:50-1:200

Background

This gene encodes a member of the mammalian activation transcription factor/cAMP responsive element-binding (CREB) protein family of transcription factors. This gene is induced by a variety of signals, including many of those encountered by cancer cells, and is involved in the complex process of cellular stress response. Multiple transcript variants encoding different isoforms have been found for this gene. It is possible that alternative splicing of this gene may be physiologically important in the regulation of target genes.

**Focus on your research
 Service for life science**