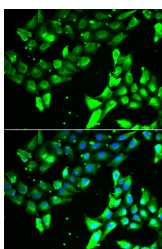


KIF2B Polyclonal Antibody

Catalog No.	E-AB-66109	Reactivity	H
Storage	Store at -20°C. Avoid freeze / thaw cycles.	Host	Rabbit
Applications	IF	Isotype	IgG

Note: Centrifuge before opening to ensure complete recovery of vial contents.

Images



Immunofluorescence analysis of A549 cells using KIF2B Polyclonal Antibody

Immunogen Information

Immunogen	Recombinant fusion protein of human KIF2B (NP_115948.4).
GeneID	84643
Swissprot	Q8N4N8
Synonyms	KIF2B

Product Information

Buffer	PBS with 0.02% sodium azide, 50% glycerol, pH7.3.
Purify	Affinity purification
Dilution	IF 1:50-1:200

Background

KIF2B (Kinesin Family Member 2B) is a Protein Coding gene. Diseases associated with KIF2B include Charcot-Marie-Tooth Disease, Type 4C and Hereditary Neuropathies. Among its related pathways are Signaling by GPCR and Mitotic Prometaphase. Gene Ontology (GO) annotations related to this gene include ATPase activity and microtubule motor activity. An important paralog of this gene is KIF2A.

For Research Use Only

Thank you for your recent purchase.

If you would like to learn more about antibodies, please visit www.elabscience.com.

**Focus on your research
 Service for life science**

Applications: WB-Western Blot IHC-Immunohistochemistry IF-Immunofluorescence IP-Immunoprecipitation FC-Flow cytometry ChIP-Chromatin Immunoprecipitation Reactivity: H-Human R-Rat M-Mouse Mk-Monkey Dg-Dog Ch-Chicken Hm-Hamster Rb-Rabbit Sh-Sheep Pg-Pig Z-Zebrafish X-Xenopus C-Cow.