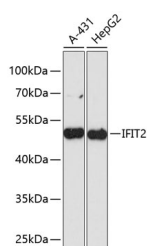


## IFIT2 Polyclonal Antibody

<b>Catalog No.</b>	E-AB-66136	<b>Reactivity</b>	H
<b>Storage</b>	Store at -20°C. Avoid freeze / thaw cycles.	<b>Host</b>	Rabbit
<b>Applications</b>	WB	<b>Isotype</b>	IgG

**Note:** Centrifuge before opening to ensure complete recovery of vial contents.

### Images



Western blot analysis of extracts of various cell lines using IFIT2 Polyclonal Antibody at dilution of 1:3000.

### Immunogen Information

<b>Immunogen</b>	Recombinant fusion protein of human IFIT2 (NP_001538.4).
<b>GeneID</b>	3433
<b>Swissprot</b>	P09913
<b>Synonyms</b>	IFIT2,G10P2,GARG-39,IFI-54,IFI-54K,IFI54,IFIT-2, ISG-54 K,ISG-54K,ISG54,P54,cig42

### Product Information

<b>Calculated MW</b>	54kDa
<b>Observed MW</b>	50kDa
<b>Buffer</b>	PBS with 0.02% sodium azide, 50% glycerol, pH7.3.
<b>Purify</b>	Affinity purification
<b>Dilution</b>	WB 1:500-1:2000

### Background

IFIT2 (Interferon Induced Protein With Tetratricopeptide Repeats 2) is a Protein Coding gene. Diseases associated with IFIT2 include Microphthalmia With Limb Anomalies. Among its related pathways are Interferon gamma signaling and Innate Immune System. An important paralog of this gene is IFIT3.

#### For Research Use Only

Thank you for your recent purchase.  
 If you would like to learn more about antibodies, please visit [www.elabscience.com](http://www.elabscience.com).

**Focus on your research  
 Service for life science**

Applications:WB-Western Blot IHC-Immunohistochemistry IF-Immunofluorescence IP-Immunoprecipitation FC-Flow cytometry ChIP-Chromatin Immunoprecipitation Reactivity: H-Human R-Rat M-Mouse Mk-Monkey Dg-Dog Ch-Chicken Hm-Hamster Rb-Rabbit Sh-Sheep Pg-Pig Z-Zebrafish X-Xenopus C-Cow.