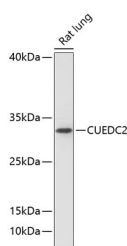


CUEDC2 Polyclonal Antibody

Catalog No.	E-AB-66163	Reactivity	R
Storage	Store at -20°C. Avoid freeze / thaw cycles.	Host	Rabbit
Applications	WB	Isotype	IgG

Note: Centrifuge before opening to ensure complete recovery of vial contents.

Images



Western blot analysis of extracts of Rat lung using CUEDC2 Polyclonal Antibody at dilution of 1:1000.

Immunogen Information

Immunogen	Recombinant fusion protein of human CUEDC2 (NP_076945.2).
GeneID	79004
Swissprot	Q9H467
Synonyms	CUEDC2,C10orf66,bA18I14.5

Product Information

Calculated MW	32kDa
Observed MW	32kDa
Buffer	PBS with 0.02% sodium azide, 50% glycerol, pH7.3.
Purify	Affinity purification
Dilution	WB 1:500-1:2000

Background

CUEDC2 is involved in ubiquitin- and proteasome-mediated degradation of progesterone receptor and estrogen receptor (ER)-alpha. CUEDC2 reduced PRB protein content and promoted progesterone-induced PRB degradation via the ubiquitin-proteasome pathway.

For Research Use Only

Thank you for your recent purchase.

If you would like to learn more about antibodies, please visit www.elabscience.com.

**Focus on your research
 Service for life science**

Applications: WB-Western Blot IHC-Immunohistochemistry IF-Immunofluorescence IP-Immunoprecipitation FC-Flow cytometry ChIP-Chromatin Immunoprecipitation Reactivity: H-Human R-Rat M-Mouse Mk-Monkey Dg-Dog Ch-Chicken Hm-Hamster Rb-Rabbit Sh-Sheep Pg-Pig Z-Zebrafish X-Xenopus C-Cow.