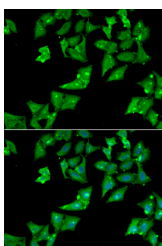


AGA Polyclonal Antibody

Catalog No.	E-AB-66170	Reactivity	H,M
Storage	Store at -20°C. Avoid freeze / thaw cycles.	Host	Rabbit
Applications	IF	Isotype	IgG

Note: Centrifuge before opening to ensure complete recovery of vial contents.

Images



Immunofluorescence analysis of HeLa cells using AGA Polyclonal Antibody

Immunogen Information

Immunogen	Recombinant fusion protein of human AGA (NP_000018.2).
GeneID	175
Swissprot	P20933
Synonyms	AGA,AGU,ASRG,GA

Product Information

Buffer	PBS with 0.02% sodium azide, 50% glycerol, pH7.3.
Purify	Affinity purification
Dilution	IF 1:50-1:100

Background

This gene encodes a member of the N-terminal nucleophile (Ntn) hydrolase family of proteins. The encoded preproprotein is proteolytically processed to generate alpha and beta chains that comprise the mature enzyme. This enzyme is involved in the catabolism of N-linked oligosaccharides of glycoproteins. It cleaves asparagine from N-acetylglucosamines as one of the final steps in the lysosomal breakdown of glycoproteins. Mutations in this gene are associated with the lysosomal storage disease aspartylglycosaminuria that results in progressive neurodegeneration. Alternative splicing results in multiple transcript variants, at least one of which encodes an isoform that is subject to proteolytic processing.

For Research Use Only

Thank you for your recent purchase.
 If you would like to learn more about antibodies, please visit www.elabscience.com.

**Focus on your research
 Service for life science**

Applications:WB-Western Blot IHC-Immunohistochemistry IF-Immunofluorescence IP-Immunoprecipitation FC-Flow cytometry ChIP-Chromatin Immunoprecipitation Reactivity: H-Human R-Rat M-Mouse Mk-Monkey Dg-Dog Ch-Chicken Hm-Hamster Rb-Rabbit Sh-Sheep Pg-Pig Z-Zebrafish X-Xenopus C-Cow.