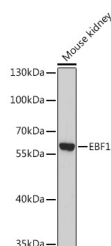


## EBF1 Polyclonal Antibody

<b>Catalog No.</b>	E-AB-66183	<b>Reactivity</b>	M
<b>Storage</b>	Store at -20°C. Avoid freeze / thaw cycles.	<b>Host</b>	Rabbit
<b>Applications</b>	WB	<b>Isotype</b>	IgG

**Note:** Centrifuge before opening to ensure complete recovery of vial contents.

### Images



Western blot analysis of extracts of Mouse kidney using EBF1 Polyclonal Antibody at dilution of 1:1000.

### Immunogen Information

<b>Immunogen</b>	A synthetic peptide of human EBF1 (NP_076870.1).
<b>GeneID</b>	1879
<b>Swissprot</b>	Q9UH73
<b>Synonyms</b>	EBF1,COE1,EBF,O/E-1,OLF1

### Product Information

<b>Calculated MW</b>	61kDa/64kDa
<b>Observed MW</b>	61kDa
<b>Buffer</b>	PBS with 0.02% sodium azide, 50% glycerol, pH7.3.
<b>Purify</b>	Affinity purification
<b>Dilution</b>	WB 1:500-1:2000

### Background

EBF1 (EBF Transcription Factor 1) is a Protein Coding gene. Diseases associated with EBF1 include Plasmacytoma and Breast Abscess. Among its related pathways are Regulation of lipid metabolism by Peroxisome proliferator-activated receptor alpha (PPARalpha) and Developmental Biology. Gene Ontology (GO) annotations related to this gene include DNA-binding transcription factor activity and C2H2 zinc finger domain binding. An important paralog of this gene is EBF3.

#### For Research Use Only

Thank you for your recent purchase.  
 If you would like to learn more about antibodies, please visit [www.elabscience.com](http://www.elabscience.com).

**Focus on your research  
 Service for life science**

Applications:WB-Western Blot IHC-Immunohistochemistry IF-Immunofluorescence IP-Immunoprecipitation FC-Flow cytometry ChIP-Chromatin Immunoprecipitation Reactivity: H-Human R-Rat M-Mouse Mk-Monkey Dg-Dog Ch-Chicken Hm-Hamster Rb-Rabbit Sh-Sheep Pg-Pig Z-Zebrafish X-Xenopus C-Cow.