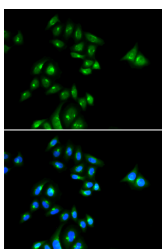


PHC3 Polyclonal Antibody

Catalog No.	E-AB-66227	Reactivity	H
Storage	Store at -20°C. Avoid freeze / thaw cycles.	Host	Rabbit
Applications	IF	Isotype	IgG

Note: Centrifuge before opening to ensure complete recovery of vial contents.

Images



Immunofluorescence analysis of U2OS cells using PHC3 Polyclonal Antibody

Immunogen Information

Immunogen	Recombinant fusion protein of human PHC3 (NP_079223.3).
GeneID	80012
Swissprot	Q8NDX5
Synonyms	PHC3,EDR3,HPH3

Product Information

Buffer	PBS with 0.02% sodium azide, 50% glycerol, pH7.3.
Purify	Affinity purification
Dilution	IF 1:50-1:100

Background

PHC3 (Polyhomeotic Homolog 3) is a Protein Coding gene. Diseases associated with PHC3 include Severe Combined Immunodeficiency, Autosomal Recessive, T Cell-Negative, B Cell-Positive, Nk Cell-Negative and Hyperoxaluria, Primary, Type Iii. Among its related pathways are Metabolism of proteins and SUMOylation. Gene Ontology (GO) annotations related to this gene include sequence-specific DNA binding. An important paralog of this gene is PHC2.

For Research Use Only

Thank you for your recent purchase.
 If you would like to learn more about antibodies, please visit www.elabscience.com.

**Focus on your research
 Service for life science**

Applications:WB-Western Blot IHC-Immunohistochemistry IF-Immunofluorescence IP-Immunoprecipitation FC-Flow cytometry ChIP-Chromatin Immunoprecipitation Reactivity: H-Human R-Rat M-Mouse Mk-Monkey Dg-Dog Ch-Chicken Hm-Hamster Rb-Rabbit Sh-Sheep Pg-Pig Z-Zebrafish X-Xenopus C-Cow.