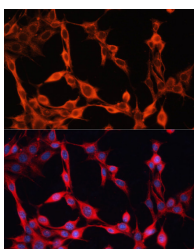


## SLC25A23 Polyclonal Antibody

<b>Catalog No.</b>	E-AB-66271	<b>Reactivity</b>	H,M,R
<b>Storage</b>	Store at -20°C. Avoid freeze / thaw cycles.	<b>Host</b>	Rabbit
<b>Applications</b>	IF	<b>Isotype</b>	IgG

**Note:** Centrifuge before opening to ensure complete recovery of vial contents.

### Images



Immunofluorescence analysis of NIH/3T3 cells using SLC25A23 Polyclonal Antibody at dilution of 1:100. Blue: DAPI for nuclear staining.

### Immunogen Information

<b>Immunogen</b>	Recombinant fusion protein of human SLC25A23 (NP_077008.2).
<b>GeneID</b>	79085
<b>Swissprot</b>	Q9BV35
<b>Synonyms</b>	SLC25A23,APC2,MCSC2,SCaMC-3

### Product Information

<b>Buffer</b>	PBS with 0.02% sodium azide, 50% glycerol, pH7.3.
<b>Purify</b>	Affinity purification
<b>Dilution</b>	IF 1:50-1:200

### Background

SLC25A23 (Solute Carrier Family 25 Member 23) is a Protein Coding gene. Diseases associated with SLC25A23 include Sennetsu Fever. Gene Ontology (GO) annotations related to this gene include calcium ion binding. An important paralog of this gene is SLC25A25.

#### For Research Use Only

Thank you for your recent purchase.  
 If you would like to learn more about antibodies, please visit [www.elabscience.com](http://www.elabscience.com).

**Focus on your research  
 Service for life science**

Applications:WB-Western Blot IHC-Immunohistochemistry IF-Immunofluorescence IP-Immunoprecipitation FC-Flow cytometry ChIP-Chromatin Immunoprecipitation Reactivity: H-Human R-Rat M-Mouse Mk-Monkey Dg-Dog Ch-Chicken Hm-Hamster Rb-Rabbit Sh-Sheep Pg-Pig Z-Zebrafish X-Xenopus C-Cow.