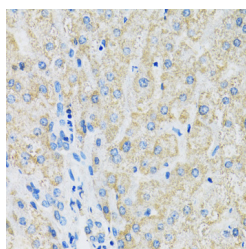


SLC19A1 Polyclonal Antibody

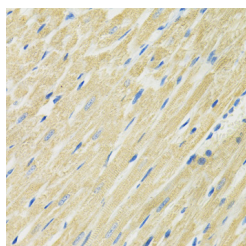
| | | | |
|---------------------|---|-------------------|--------|
| Catalog No. | E-AB-66318 | Reactivity | H,M,R |
| Storage | Store at -20°C. Avoid freeze / thaw cycles. | Host | Rabbit |
| Applications | IHC | Isotype | IgG |

Note: Centrifuge before opening to ensure complete recovery of vial contents.

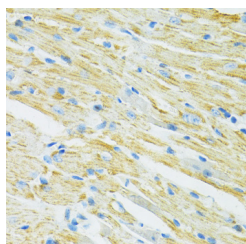
Images



Immunohistochemistry of paraffin-embedded Human liver using SLC19A1 Polyclonal Antibody at dilution of 1:100 (40x lens).



Immunohistochemistry of paraffin-embedded Rat heart using SLC19A1 Polyclonal Antibody at dilution of 1:100 (40x lens).



Immunohistochemistry of paraffin-embedded Mouse heart using SLC19A1 Polyclonal Antibody at dilution of 1:100 (40x lens).

Immunogen Information

| | |
|------------------|--|
| Immunogen | Recombinant fusion protein of human SLC19A1 (NP_919231.1). |
| GeneID | 6573 |
| Swissprot | P41440 |
| Synonyms | SLC19A1,CHMD,FOLT,IFC1,REFC,RFC1 |

Product Information

| | |
|-----------------|---|
| Buffer | PBS with 0.02% sodium azide, 50% glycerol, pH7.3. |
| Purify | Affinity purification |
| Dilution | IHC 1:50-1:200 |

Background

The membrane protein encoded by this gene is a transporter of folate and is involved in the regulation of intracellular concentrations of folate. Three transcript variants encoding different isoforms have been found for this gene.

For Research Use Only

Thank you for your recent purchase.
 If you would like to learn more about antibodies, please visit www.elabscience.com.

**Focus on your research
 Service for life science**

Applications: WB-Western Blot IHC-Immunohistochemistry IF-Immunofluorescence IP-Immunoprecipitation FC-Flow cytometry ChIP-Chromatin Immunoprecipitation Reactivity: H-Human R-Rat M-Mouse Mk-Monkey Dg-Dog Ch-Chicken Hm-Hamster Rb-Rabbit Sh-Sheep Pg-Pig Z-Zebrafish X-Xenopus C-Cow.