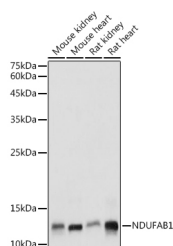


NDUFAB1 Polyclonal Antibody

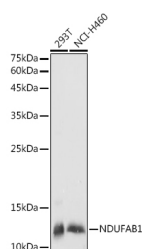
Catalog No.	E-AB-66322	Reactivity	H,M,R
Storage	Store at -20°C. Avoid freeze / thaw cycles.	Host	Rabbit
Applications	WB	Isotype	IgG

Note: Centrifuge before opening to ensure complete recovery of vial contents.

Images



Western blot analysis of extracts of various cell lines using NDUFAB1 Polyclonal Antibody at 1:1000 dilution.



Western blot analysis of extracts of various cell lines using NDUFAB1 Polyclonal Antibody at 1:1000 dilution.

Immunogen Information

Immunogen	A synthetic peptide of human NDUFAB1
GeneID	4706
Swissprot	O14561
Synonyms	NDUFAB1,ACP,ACP1,FASN2A,SDAP

Product Information

Calculated MW	17Da
Observed MW	12KDa
Buffer	PBS with 0.05% proclin300,50% glycerol,pH7.3.
Purify	Affinity purification
Dilution	WB 1:500-1:2000

Background

Carrier of the growing fatty acid chain in fatty acid biosynthesis (By similarity). Accessory and non-catalytic subunit of the mitochondrial membrane respiratory chain NADH dehydrogenase (Complex I, which functions in the transfer of electrons from NADH to the respiratory chain.

For Research Use Only

Thank you for your recent purchase.
 If you would like to learn more about antibodies, please visit www.elabscience.com.

**Focus on your research
 Service for life science**

Applications:WB-Western Blot IHC-Immunohistochemistry IF-Immunofluorescence IP-Immunoprecipitation FC-Flow cytometry ChIP-Chromatin Immunoprecipitation Reactivity: H-Human R-Rat M-Mouse Mk-Monkey Dg-Dog Ch-Chicken Hm-Hamster Rb-Rabbit Sh-Sheep Pg-Pig Z-Zebrafish X-Xenopus C-Cow.