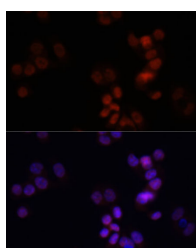


KDM7A Polyclonal Antibody

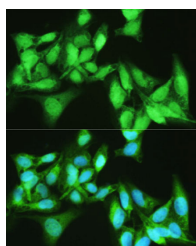
Catalog No.	E-AB-66325	Reactivity	H
Storage	Store at -20°C. Avoid freeze / thaw cycles.	Host	Rabbit
Applications	IF	Isotype	IgG

Note: Centrifuge before opening to ensure complete recovery of vial contents.

Images



Immunofluorescence analysis of HCT116 cells using KDM7A Polyclonal Antibody at dilution of 1:150. Blue: DAPI for nuclear staining.



Immunofluorescence analysis of U2OS cells using KDM7A Polyclonal Antibody at dilution of 1:100. Blue: DAPI for nuclear staining.

Immunogen Information

Immunogen	Recombinant fusion protein of mouse KDM7A (NP_001028602.2).
GeneID	338523
Swissprot	Q3UWM4
Synonyms	KDM7A,JHDM1D

Product Information

Buffer	PBS with 0.02% sodium azide, 50% glycerol, pH7.3.
Purify	Affinity purification
Dilution	IF 1:50-1:200

Background

KDM7A (Lysine Demethylase 7A) is a Protein Coding gene. Diseases associated with KDM7A include Syndromic X-Linked Intellectual Disability Siderius Type. Among its related pathways are Chromatin organization and Oncogenic MAPK signaling. Gene Ontology (GO) annotations related to this gene include iron ion binding and oxidoreductase activity, acting on paired donors, with incorporation or reduction of molecular oxygen, 2-oxoglutarate as one donor, and incorporation of one atom each of oxygen into both donors. An important paralog of this gene is PHF8.

For Research Use Only

Thank you for your recent purchase.
 If you would like to learn more about antibodies, please visit www.elabscience.com.

**Focus on your research
 Service for life science**

Applications:WB-Western Blot IHC-Immunohistochemistry IF-Immunofluorescence IP-Immunoprecipitation FC-Flow cytometry ChIP-Chromatin Immunoprecipitation Reactivity: H-Human R-Rat M-Mouse Mk-Monkey Dg-Dog Ch-Chicken Hm-Hamster Rb-Rabbit Sh-Sheep Pg-Pig Z-Zebrafish X-Xenopus C-Cow.