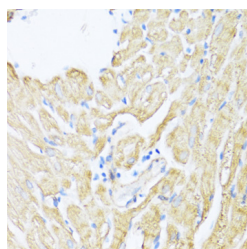


ALOX12 Polyclonal Antibody

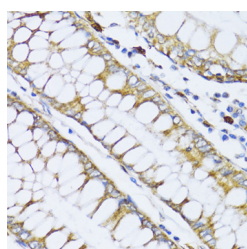
Catalog No.	E-AB-66327	Reactivity	H,M,R
Storage	Store at -20°C. Avoid freeze / thaw cycles.	Host	Rabbit
Applications	IHC,IF	Isotype	IgG

Note: Centrifuge before opening to ensure complete recovery of vial contents.

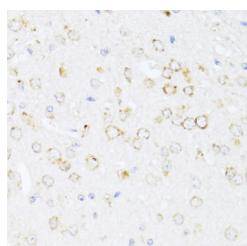
Images



Immunohistochemistry of paraffin-embedded Rat heart using ALOX12 Polyclonal Antibody at dilution of 1:100 (40x lens).



Immunohistochemistry of paraffin-embedded Human colon carcinoma using ALOX12 Polyclonal Antibody at dilution of 1:100 (40x lens).



Immunohistochemistry of paraffin-embedded Mouse brain using ALOX12 Polyclonal Antibody at dilution of 1:100 (40x lens).

Immunogen Information

Immunogen	Recombinant fusion protein of human ALOX12 (NP_000688.2).
GeneID	239
Swissprot	P18054
Synonyms	ALOX12,12-LOX,12S-LOX,LOG12,12S-type

Product Information

Buffer	PBS with 0.02% sodium azide, 50% glycerol, pH7.3.
Purify	Affinity purification
Dilution	IHC 1:50-1:200 IF 1:50-1:200

Background

This gene encodes a member of the lipoxygenase family of proteins. The encoded enzyme acts on different polyunsaturated fatty acid substrates to generate bioactive lipid mediators including eicosanoids and lipoxins. The encoded enzyme and its reaction products have been shown to regulate platelet function. Elevated expression of this gene has been observed in pancreatic islets derived from human diabetes patients. Allelic variants in this gene may be associated with susceptibility to toxoplasmosis. Multiple pseudogenes of this gene have been identified in the human genome.

For Research Use Only

Thank you for your recent purchase.
 If you would like to learn more about antibodies, please visit www.elabscience.com.

**Focus on your research
 Service for life science**

Applications:WB-Western Blot IHC-Immunohistochemistry IF-Immunofluorescence IP-Immunoprecipitation FC-Flow cytometry ChIP-Chromatin Immunoprecipitation Reactivity: H-Human R-Rat M-Mouse Mk-Monkey Dg-Dog Ch-Chicken Hm-Hamster Rb-Rabbit Sh-Sheep Pg-Pig Z-Zebrafish X-Xenopus C-Cow.