

## SLC5A6 Polyclonal Antibody

**Catalog No.** E-AB-66355

**Note:** Centrifuge before opening to ensure complete recovery of vial contents.

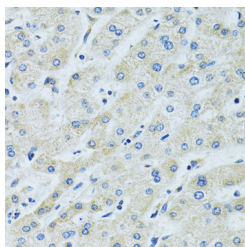
### Description

<b>Reactivity</b>	Human, Mouse, Rat
<b>Immunogen</b>	A synthetic peptide of human SLC5A6 (NP_066918.2).
<b>Host</b>	Rabbit
<b>Isotype</b>	IgG
<b>Purification</b>	Affinity purification
<b>Conjugation</b>	Unconjugated
<b>Buffer</b>	PBS with 0.02% sodium azide, 50% glycerol, pH7.3.

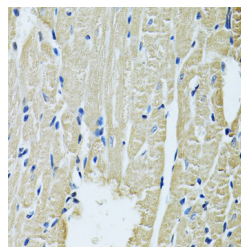
### Applications Recommended Dilution

**IHC** 1:50-1:200

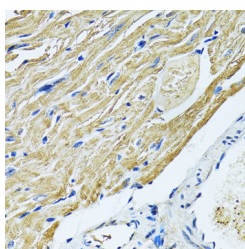
### Data



Immunohistochemistry of paraffin-embedded Human liver using SLC5A6 Polyclonal Antibody at dilution of 1:100 (40x lens).



Immunohistochemistry of paraffin-embedded Rat heart using SLC5A6 Polyclonal Antibody at dilution of 1:100 (40x lens).



Immunohistochemistry of paraffin-embedded Mouse heart using SLC5A6 Polyclonal Antibody at dilution of 1:100 (40x lens).

### Preparation & Storage

**Storage** Store at -20°C. Avoid freeze / thaw cycles.

### Background

SLC5A6 (Solute Carrier Family 5 Member 6) is a Protein Coding gene. Diseases associated with SLC5A6 include Biotin

### For Research Use Only

Deficiency and Retinitis Pigmentosa 50. Among its related pathways are Metabolism of water-soluble vitamins and cofactors and NRF2 pathway. Gene Ontology (GO) annotations related to this gene include transporter activity and sodium-dependent multivitamin transmembrane transporter activity. An important paralog of this gene is SLC5A8.