

## SH2D3A Polyclonal Antibody

**Catalog No.** E-AB-66358

**Note:** Centrifuge before opening to ensure complete recovery of vial contents.

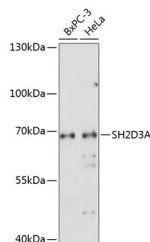
### Description

|                     |   |
|---------------------|---|
| <b>Reactivity</b>   | Human   |
| <b>Immunogen</b>    | Recombinant fusion protein of human SH2D3A (NP_005481.2). |
| <b>Host</b>         | Rabbit  |
| <b>Isotype</b>      | IgG   |
| <b>Purification</b> | Affinity purification                                     |
| <b>Conjugation</b>  | Unconjugated  |
| <b>Buffer</b>       | PBS with 0.02% sodium azide, 50% glycerol, pH7.3.         |

### Applications Recommended Dilution

**WB** 1:500-1:2000

### Data



Western blot analysis of extracts of various cell lines using SH2D3A Polyclonal Antibody at dilution of 1:1000.

**Observed Mw:63kDa**  
**Calculated Mw:52kDa/63kDa**

### Preparation & Storage

**Storage** Store at -20°C. Avoid freeze / thaw cycles.

### Background

SH2D3A (SH2 Domain Containing 3A) is a Protein Coding gene. Diseases associated with SH2D3A include Severe Acute Respiratory Syndrome and Eastern Equine Encephalitis. Gene Ontology (GO) annotations related to this gene include guanyl-nucleotide exchange factor activity and SH3/SH2 adaptor activity. An important paralog of this gene is BCAR3.

### For Research Use Only