

## YTHDC2 Polyclonal Antibody

**Catalog No.** E-AB-66381

**Note:** Centrifuge before opening to ensure complete recovery of vial contents.

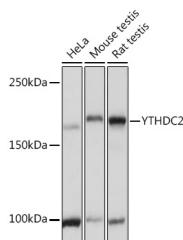
### Description

<b>Reactivity</b>	Human, Mouse, Rat
<b>Immunogen</b>	Recombinant fusion protein of human YTHDC2
<b>Host</b>	Rabbit
<b>Isotype</b>	IgG
<b>Purification</b>	Affinity purification
<b>Conjugation</b>	Unconjugated
<b>Buffer</b>	PBS with 0.01% thiomersal, 50% glycerol, pH7.3.

### Applications Recommended Dilution

**WB** 1:500-1:2000

### Data



Western blot analysis of extracts of various cell lines using YTHDC2 Polyclonal Antibody at 1:3000 dilution.

**Observed Mw:160KDa**  
**Calculated Mw:160kDa**

### Preparation & Storage

**Storage** Store at -20°C. Avoid freeze / thaw cycles.

### Background

This gene encodes a member of the DEAH (Asp-Glu-Ala-His) subfamily of proteins, part of the DEAD (Asp-Glu-Ala-Asp) box family of RNA helicases. The encoded protein binds to N6-methyladenosine, a common modified RNA nucleotide that is enriched in the stop codons and 3' UTRs of eukaryotic messenger RNAs. Binding of proteins to this modified nucleotide may regulate mRNA translation and stability. This gene may be associated with susceptibility to pancreatic cancer in human patients, and knockdown of this gene resulted in reduced proliferation in a human liver cancer cell line. [provided by RefSeq, Sep 2016]

### For Research Use Only