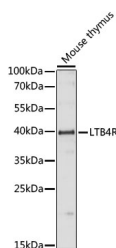


LTB4R Polyclonal Antibody

Catalog No.	E-AB-66402	Reactivity	M
Storage	Store at -20°C. Avoid freeze / thaw cycles.	Host	Rabbit
Applications	WB	Isotype	IgG

Note: Centrifuge before opening to ensure complete recovery of vial contents.

Images



Western blot analysis of extracts of Mouse thymus using LTB4R Polyclonal Antibody at dilution of 1:1000.

Immunogen Information

Immunogen	A synthetic peptide of human LTB4R (NP_858043.1).
GeneID	1241
Swissprot	Q15722
Synonyms	LTB4R,BLT1,BLTR,CMKRL1,GPR16,LTB4R1,LTBR1,P2RY7,P2Y7

Product Information

Calculated MW	37kDa
Observed MW	37kDa
Buffer	PBS with 0.02% sodium azide, 50% glycerol, pH7.3.
Purify	Affinity purification
Dilution	WB 1:500-1:2000

Background

LTB4R (Leukotriene B4 Receptor) is a Protein Coding gene. Diseases associated with LTB4R include Cicatricial Entropion and Spastic Entropion. Among its related pathways are RET signaling and Signaling by GPCR. Gene Ontology (GO) annotations related to this gene include G protein-coupled receptor activity and leukotriene receptor activity. An important paralog of this gene is LTB4R2.

For Research Use Only

Thank you for your recent purchase.

If you would like to learn more about antibodies, please visit www.elabscience.com.

**Focus on your research
 Service for life science**

Applications:WB-Western Blot IHC-Immunohistochemistry IF-Immunofluorescence IP-Immunoprecipitation FC-Flow cytometry ChIP-Chromatin Immunoprecipitation Reactivity: H-Human R-Rat M-Mouse Mk-Monkey Dg-Dog Ch-Chicken Hm-Hamster Rb-Rabbit Sh-Sheep Pg-Pig Z-Zebrafish X-Xenopus C-Cow.