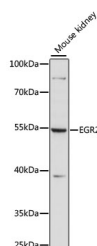


## EGR2 Polyclonal Antibody

<b>Catalog No.</b>	E-AB-66407	<b>Reactivity</b>	M
<b>Storage</b>	Store at -20°C. Avoid freeze / thaw cycles.	<b>Host</b>	Rabbit
<b>Applications</b>	WB	<b>Isotype</b>	IgG

**Note:** Centrifuge before opening to ensure complete recovery of vial contents.

### Images



Western blot analysis of extracts of Mouse kidney using EGR2 Polyclonal Antibody at dilution of 1:1000.

### Immunogen Information

<b>Immunogen</b>	A synthetic peptide of human EGR2 (NP_000390.2).
<b>GeneID</b>	1959
<b>Swissprot</b>	P11161
<b>Synonyms</b>	EGR2,AT591,CMT1D,CMT4E,KROX20

### Product Information

<b>Calculated MW</b>	44kDa/50kDa
<b>Observed MW</b>	55kDa
<b>Buffer</b>	PBS with 0.02% sodium azide, 50% glycerol, pH7.3.
<b>Purify</b>	Affinity purification
<b>Dilution</b>	WB 1:500-1:2000

### Background

The protein encoded by this gene is a transcription factor with three tandem C2H2-type zinc fingers. Defects in this gene are associated with Charcot-Marie-Tooth disease type 1D (CMT1D), Charcot-Marie-Tooth disease type 4E (CMT4E), and with Dejerine-Sottas syndrome (DSS). Multiple transcript variants encoding two different isoforms have been found for this gene.

#### For Research Use Only

Thank you for your recent purchase.  
If you would like to learn more about antibodies, please visit [www.elabscience.com](http://www.elabscience.com).

#### Focus on your research Service for life science

Applications: WB-Western Blot IHC-Immunohistochemistry IF-Immunofluorescence IP-Immunoprecipitation FC-Flow cytometry ChIP-Chromatin Immunoprecipitation Reactivity: H-Human R-Rat M-Mouse Mk-Monkey Dg-Dog Ch-Chicken Hm-Hamster Rb-Rabbit Sh-Sheep Pg-Pig Z-Zebrafish X-Xenopus C-Cow.