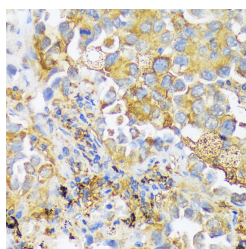


## ZDHHC18 Polyclonal Antibody

|                     |   |                   |        |
|---------------------|---|-------------------|--------|
| <b>Catalog No.</b>  | E-AB-66459                                  | <b>Reactivity</b> | H,M,R  |
| <b>Storage</b>      | Store at -20°C. Avoid freeze / thaw cycles. | <b>Host</b>       | Rabbit |
| <b>Applications</b> | IHC   | <b>Isotype</b>    | IgG    |

**Note:** Centrifuge before opening to ensure complete recovery of vial contents.

### Images



Immunohistochemistry of paraffin-embedded Human lung cancer using ZDHHC18 Polyclonal Antibody at dilution of 1:100 (40x lens).

### Immunogen Information

|                  |  |
|------------------|--|
| <b>Immunogen</b> | Recombinant fusion protein of human ZDHHC18 (NP_115659.1). |
| <b>GeneID</b>    | 84243  |
| <b>Swissprot</b> | Q9NUE0   |
| <b>Synonyms</b>  | ZDHHC18,DHHC-18,DHHC18                                     |

### Product Information

|                 |   |
|-----------------|---|
| <b>Buffer</b>   | PBS with 0.02% sodium azide, 50% glycerol, pH7.3. |
| <b>Purify</b>   | Affinity purification                             |
| <b>Dilution</b> | IHC 1:50-1:200                                    |

### Background

ZDHHC18 (Zinc Finger DHHC-Type Palmitoyltransferase 18) is a Protein Coding gene. Gene Ontology (GO) annotations related to this gene include protein-cysteine S-palmitoyltransferase activity and palmitoyltransferase activity. An important paralog of this gene is ZDHHC14.

#### For Research Use Only

Thank you for your recent purchase.  
 If you would like to learn more about antibodies, please visit [www.elabscience.com](http://www.elabscience.com).

**Focus on your research  
 Service for life science**

Applications:WB-Western Blot IHC-Immunohistochemistry IF-Immunofluorescence IP-Immunoprecipitation FC-Flow cytometry ChIP-Chromatin Immunoprecipitation Reactivity: H-Human R-Rat M-Mouse Mk-Monkey Dg-Dog Ch-Chicken Hm-Hamster Rb-Rabbit Sh-Sheep Pg-Pig Z-Zebrafish X-Xenopus C-Cow.